

Product datasheet for **TA305906**

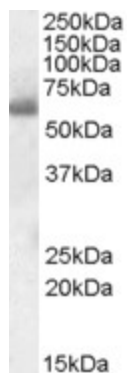
SH2D3A Goat Polyclonal Antibody

Product data:

Product Type:	Primary Antibodies
Applications:	WB
Recommended Dilution:	WB: 0.1-0.3ug/ml.
Reactivity:	Human
Host:	Goat
Isotype:	IgG
Clonality:	Polyclonal
Immunogen:	Peptide with sequence C-APRAERFEKFQR, from the internal region (near C terminus) of the protein sequence according to NP_005481.2.
Formulation:	0.5 mg/ml in Tris saline, 0.02% sodium azide, pH7.3 with 0.5% bovine serum albumin
Concentration:	lot specific
Purification:	Purified from goat serum by ammonium sulphate precipitation followed by antigen affinity chromatography using the immunizing peptide. Supplied at 0.5 mg/ml in Tris saline, 0.02% sodium azide, pH7.3 with 0.5% bovine serum albumin. Aliquot and store at -20C. Minimize freezing and thawing.
Conjugation:	Unconjugated
Storage:	Store at -20°C as received.
Stability:	Stable for 12 months from date of receipt.
Gene Name:	SH2 domain containing 3A
Database Link:	NP_005481 Entrez Gene 10045 Human Q9BRG2
Synonyms:	NSP1
Protein Families:	Druggable Genome

[View online »](#)

Product images:



TA305906 (0.1ug/ml) staining of Human Tonsil lysate (35ug protein in RIPA buffer). Primary incubation was 1 hour. Detected by chemiluminescence.