

Product datasheet for **TA305900**

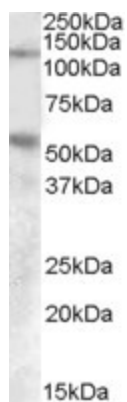
Palladin (PALLD) Goat Polyclonal Antibody

Product data:

Product Type:	Primary Antibodies
Applications:	WB
Recommended Dilution:	WB: 0.1-0.3ug/ml.
Reactivity:	Human (Expected from sequence similarity: Mouse, Rat, Dog)
Host:	Goat
Isotype:	IgG
Clonality:	Polyclonal
Immunogen:	Peptide with sequence C-RDSGDENEPIQER, from the internal region of the protein sequence according to NP_057165.3.
Formulation:	0.5 mg/ml in Tris saline, 0.02% sodium azide, pH7.3 with 0.5% bovine serum albumin
Concentration:	lot specific
Purification:	Purified from goat serum by ammonium sulphate precipitation followed by antigen affinity chromatography using the immunizing peptide. Supplied at 0.5 mg/ml in Tris saline, 0.02% sodium azide, pH7.3 with 0.5% bovine serum albumin. Aliquot and store at -20C. Minimize freezing and thawing.
Conjugation:	Unconjugated
Storage:	Store at -20°C as received.
Stability:	Stable for 12 months from date of receipt.
Gene Name:	palladin, cytoskeletal associated protein
Database Link:	NP_001159580 Entrez Gene 72333 MouseEntrez Gene 364558 RatEntrez Gene 477351 DogEntrez Gene 23022 Human Q8WX93
Background:	Palladin is a component of actin-containing microfilaments that control cell shape, adhesion, and contraction. [supplied by OMIM]
Synonyms:	CGI-151; CGI151; MYN; PNCA1; SIH002



[View online »](#)

Product images:

TA305900 (0.1ug/ml) staining of Human Umbilical Cord lysate (35ug protein in RIPA buffer) with (B) and without (A) blocking with the immunising peptide. Primary incubation was 1 hour. Detected by chemiluminescence.