

## Product datasheet for **TA305896**

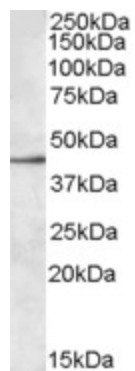
### SIGLEC8 Goat Polyclonal Antibody

#### Product data:

Product Type:	Primary Antibodies
Applications:	WB
Recommended Dilution:	WB: 0.3-1ug/ml.
Reactivity:	Human
Host:	Goat
Isotype:	IgG
Clonality:	Polyclonal
Immunogen:	Peptide with sequence C-SYKSQLNYKTKQ, from the internal region of the protein sequence according to NP_055257.2.
Formulation:	0.5 mg/ml in Tris saline, 0.02% sodium azide, pH7.3 with 0.5% bovine serum albumin
Concentration:	lot specific
Purification:	Purified from goat serum by ammonium sulphate precipitation followed by antigen affinity chromatography using the immunizing peptide. Supplied at 0.5 mg/ml in Tris saline, 0.02% sodium azide, pH7.3 with 0.5% bovine serum albumin. Aliquot and store at -20C. Minimize freezing and thawing.
Conjugation:	Unconjugated
Storage:	Store at -20°C as received.
Stability:	Stable for 12 months from date of receipt.
Gene Name:	sialic acid binding Ig like lectin 8
Database Link:	<a href="#">NP_055257</a> <a href="#">Entrez Gene 27181 Human</a> <a href="#">Q9NYZ4</a>
Synonyms:	SAF2; SIGLEC-8; SIGLEC8L
Protein Families:	Druggable Genome, Transmembrane



[View online »](#)

**Product images:**

TA305896 (0.3ug/ml) staining of MOLT4 lysate (35ug protein in RIPA buffer). Primary incubation was 1 hour. Detected by chemiluminescence.