

Product datasheet for **TA305895**

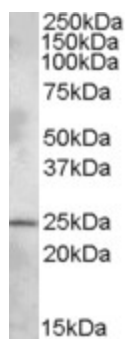
PHR1 (PLEKHB1) Goat Polyclonal Antibody

Product data:

Product Type:	Primary Antibodies
Applications:	WB
Recommended Dilution:	WB: 1-3ug/ml.
Reactivity:	Rat (Expected from sequence similarity: Human, Mouse, Cow)
Host:	Goat
Isotype:	IgG
Clonality:	Polyclonal
Immunogen:	Peptide with sequence PPDSALESPFEE-C, from the N Terminus of the protein sequence according to NP_067023.1; NP_001123506.1; NP_001123505.1; NP_001123507.1; NP_001123508.1;.
Formulation:	0.5 mg/ml in Tris saline, 0.02% sodium azide, pH7.3 with 0.5% bovine serum albumin
Concentration:	lot specific
Purification:	Purified from goat serum by ammonium sulphate precipitation followed by antigen affinity chromatography using the immunizing peptide. Supplied at 0.5 mg/ml in Tris saline, 0.02% sodium azide, pH7.3 with 0.5% bovine serum albumin. Aliquot and store at -20C. Minimize freezing and thawing.
Conjugation:	Unconjugated
Storage:	Store at -20°C as received.
Stability:	Stable for 12 months from date of receipt.
Gene Name:	pleckstrin homology domain containing B1
Database Link:	NP_001123505 Entrez Gene 27276 Mouse Entrez Gene 64471 Rat Entrez Gene 58473 Human Q9UF11
Synonyms:	KPL1; PHR1; PHRET1



[View online »](#)

Product images:

TA305895 (1ug/ml) staining of Rat Brain lysate (35ug protein in RIPA buffer). Primary incubation was 1 hour. Detected by chemiluminescence.