

## Product datasheet for **TA305891**

### COG1 Goat Polyclonal Antibody

#### Product data:

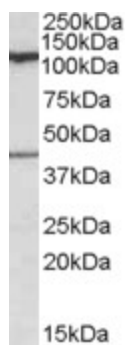
Product Type:	Primary Antibodies
Applications:	WB
Recommended Dilution:	WB: 0.1-0.3ug/ml.
Reactivity:	Human
Host:	Goat
Isotype:	IgG
Clonality:	Polyclonal
Immunogen:	Peptide with sequence C-KAKSTRNIETKAQ, from the internal region of the protein sequence according to NP_061184.1.
Formulation:	0.5 mg/ml in Tris saline, 0.02% sodium azide, pH7.3 with 0.5% bovine serum albumin
Concentration:	lot specific
Purification:	Purified from goat serum by ammonium sulphate precipitation followed by antigen affinity chromatography using the immunizing peptide. Supplied at 0.5 mg/ml in Tris saline, 0.02% sodium azide, pH7.3 with 0.5% bovine serum albumin. Aliquot and store at -20C. Minimize freezing and thawing.
Conjugation:	Unconjugated
Storage:	Store at -20°C as received.
Stability:	Stable for 12 months from date of receipt.
Gene Name:	component of oligomeric golgi complex 1
Database Link:	<a href="#">NP_061184</a> <a href="#">Entrez Gene 9382 Human</a> <a href="#">Q8WTW3</a>
Background:	The protein encoded by this gene is one of eight proteins (Cog1-8) which form a Golgi-localized complex (COG) required for normal Golgi morphology and function. It is thought that this protein is required for steps in the normal medial and trans Golgi-associated processing of glycoconjugates and plays a role in the organization of the Golgi-localized complex. [provided by RefSeq]. COMPLETENESS: complete on the 3' end.
Synonyms:	CDG2G; LDLB



[View online »](#)

Protein Families: Druggable Genome

### Product images:



TA305891 (0.1ug/ml) staining of Human Cerebellum lysate (35ug protein in RIPA buffer). Primary incubation was 1 hour. Detected by chemiluminescence.