

## Product datasheet for **TA305872**

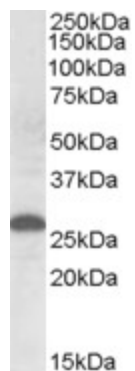
### Apom Goat Polyclonal Antibody

#### Product data:

Product Type:	Primary Antibodies
Applications:	WB
Recommended Dilution:	WB: 0.3-1ug/ml.
Reactivity:	Human (Expected from sequence similarity: Mouse, Rat)
Host:	Goat
Isotype:	IgG
Clonality:	Polyclonal
Immunogen:	Peptide with sequence C-KGNMELRTEGRPD, from the internal region of the protein sequence according to NP_061286.1.
Formulation:	0.5 mg/ml in Tris saline, 0.02% sodium azide, pH7.3 with 0.5% bovine serum albumin
Concentration:	lot specific
Purification:	Purified from goat serum by ammonium sulphate precipitation followed by antigen affinity chromatography using the immunizing peptide. Supplied at 0.5 mg/ml in Tris saline, 0.02% sodium azide, pH7.3 with 0.5% bovine serum albumin. Aliquot and store at -20C. Minimize freezing and thawing.
Conjugation:	Unconjugated
Storage:	Store at -20°C as received.
Stability:	Stable for 12 months from date of receipt.
Gene Name:	apolipoprotein M
Database Link:	<a href="#">NP_061286</a> <a href="#">Entrez Gene 55937 Human</a> <a href="#">Entrez Gene 55939 Rat</a> <a href="#">Entrez Gene 55938 Mouse</a> <a href="#">Q9Z1R3</a>
Background:	This gene is a member of the apolipoprotein L gene family. The encoded protein is found in the cytoplasm, where it may affect the movement of lipids or allow the binding of lipids to organelles. COMPLETENESS: complete on the 3' end.
Synonyms:	Apo-M; G3a; HSPC336; MGC22400; NG20



[View online »](#)

**Product images:**

TA305872 (0.5ug/ml) staining of Human Placenta lysate (35ug protein in RIPA buffer). Primary incubation was 1 hour. Detected by chemiluminescence.