

Product datasheet for **TA305871**

APOL6 Goat Polyclonal Antibody

Product data:

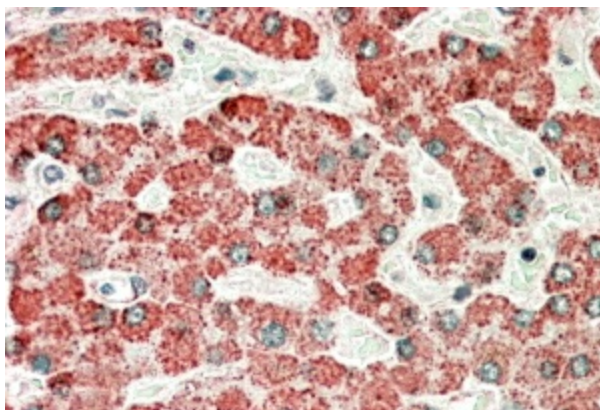
Product Type:	Primary Antibodies
Applications:	IHC, WB
Recommended Dilution:	ELISA: 1:8,000. WB: 1-3ug/ml. IHC: 5-10ug/ml
Reactivity:	Human
Host:	Goat
Isotype:	IgG
Clonality:	Polyclonal
Immunogen:	Peptide with sequence QRDEDDAPLCED, from the internal region (near N Terminus) of the protein sequence according to NP_085144.1.
Formulation:	0.5 mg/ml in Tris saline, 0.02% sodium azide, pH7.3 with 0.5% bovine serum albumin
Concentration:	lot specific
Purification:	Purified from goat serum by ammonium sulphate precipitation followed by antigen affinity chromatography using the immunizing peptide. Supplied at 0.5 mg/ml in Tris saline, 0.02% sodium azide, pH7.3 with 0.5% bovine serum albumin. Aliquot and store at -20C. Minimize freezing and thawing.
Conjugation:	Unconjugated
Storage:	Store at -20°C as received.
Stability:	Stable for 12 months from date of receipt.
Gene Name:	apolipoprotein L6
Database Link:	NP_085144 Entrez Gene 80830 Human Q9BWW8
Background:	This gene is a member of the apolipoprotein L gene family. The encoded protein is found in the cytoplasm, where it may affect the movement of lipids or allow the binding of lipids to organelles. COMPLETENESS: complete on the 3' end.
Synonyms:	APOL-VI; APOLVI



[View online »](#)

Product images:

TA305871 (1ug/ml) staining of Human Kidney lysate (35ug protein in RIPA buffer). Primary incubation was 1 hour. Detected by chemiluminescence.



TA305871 (5ug/ml) staining of paraffin embedded Human Liver. Microwaved antigen retrieval with Tris/EDTA buffer pH9, HRP-staining.