

## Product datasheet for **TA305870**

### Apolipoprotein L 4 (APOL4) Goat Polyclonal Antibody

#### Product data:

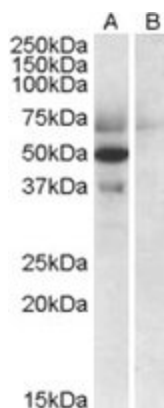
Product Type:	Primary Antibodies
Applications:	IHC, WB
Recommended Dilution:	ELISA: 1:32,000. WB: 0.3-1 µg/ml. IHC: 5 µg/ml.
Reactivity:	Human
Host:	Goat
Isotype:	IgG
Clonality:	Polyclonal
Immunogen:	Peptide with sequence C-ENLNELTHIQSLK, from the C Terminus of the protein sequence according to NP_085146.2; NP_663693.1.
Formulation:	0.5 mg/ml in Tris saline, 0.02% sodium azide, pH7.3 with 0.5% bovine serum albumin
Concentration:	lot specific
Purification:	Purified from goat serum by ammonium sulphate precipitation followed by antigen affinity chromatography using the immunizing peptide. Supplied at 0.5 mg/ml in Tris saline, 0.02% sodium azide, pH7.3 with 0.5% bovine serum albumin. Aliquot and store at -20C. Minimize freezing and thawing.
Conjugation:	Unconjugated
Storage:	Store at -20°C as received.
Stability:	Stable for 12 months from date of receipt.
Gene Name:	apolipoprotein L4
Database Link:	<a href="#">NP_085146</a> <a href="#">Entrez Gene 80832 Human</a> <a href="#">Q9BPW4</a>
Background:	The protein encoded by this gene is a member of the apolipoprotein L family and may play a role in lipid exchange and transport throughout the body, as well as in reverse cholesterol transport from peripheral cells to the liver. Two transcript variants encoding two different isoforms have been found for this gene. Only one of the isoforms appears to be a secreted protein. [provided by RefSeq]
Synonyms:	APOL-IV; APOLIV



[View online »](#)

Protein Families: Transmembrane

### Product images:



TA305870 (0.5ug/ml) staining of Human Placenta lysate (35ug protein in RIPA buffer) with (B) and without (A) blocking with the immunising peptide. Primary incubation was 1 hour. Detected by chemiluminescence.