

## Product datasheet for **TA305850**

### **MTHFD1 Goat Polyclonal Antibody**

#### **Product data:**

<b>Product Type:</b>	Primary Antibodies
<b>Applications:</b>	IHC, PEP-ELISA, WB
<b>Recommended Dilution:</b>	WB: 1-3ug/ml.
<b>Reactivity:</b>	Human (Expected from sequence similarity: Mouse, Rat)
<b>Host:</b>	Goat
<b>Isotype:</b>	IgG
<b>Clonality:</b>	Polyclonal
<b>Immunogen:</b>	Peptide with sequence RGDLNDCFIPCTPK, from the internal region of the protein sequence according to NP_005947.2.
<b>Formulation:</b>	0.5 mg/ml in Tris saline, 0.02% sodium azide, pH7.3 with 0.5% bovine serum albumin
<b>Concentration:</b>	lot specific
<b>Purification:</b>	Purified from goat serum by ammonium sulphate precipitation followed by antigen affinity chromatography using the immunizing peptide. Supplied at 0.5 mg/ml in Tris saline, 0.02% sodium azide, pH7.3 with 0.5% bovine serum albumin. Aliquot and store at -20C. Minimize freezing and thawing.
<b>Conjugation:</b>	Unconjugated
<b>Storage:</b>	Store at -20°C as received.
<b>Stability:</b>	Stable for 12 months from date of receipt.
<b>Gene Name:</b>	methylenetetrahydrofolate dehydrogenase, cyclohydrolase and formyltetrahydrofolate synthetase 1
<b>Database Link:</b>	<a href="#">NP_005947</a> <a href="#">Entrez Gene 64300 Rat</a> <a href="#">Entrez Gene 108156 Mouse</a> <a href="#">Entrez Gene 4522 Human</a> <a href="#">P11586</a>



[View online »](#)

**Background:**

This gene encodes a protein that possesses three distinct enzymatic activities, 5,10-methylenetetrahydrofolate dehydrogenase, 5,10-methenyltetrahydrofolate cyclohydrolase and 10-formyltetrahydrofolate synthetase. Each of these activities catalyzes one of three sequential reactions in the interconversion of 1-carbon derivatives of tetrahydrofolate, which are substrates for methionine, thymidylate, and de novo purine syntheses. The trifunctional enzymatic activities are conferred by two major domains, an aminoterminal portion containing the dehydrogenase and cyclohydrolase activities and a larger synthetase domain. [provided by RefSeq]

**Synonyms:**

MTHFC; MTHFD

**Protein Families:**

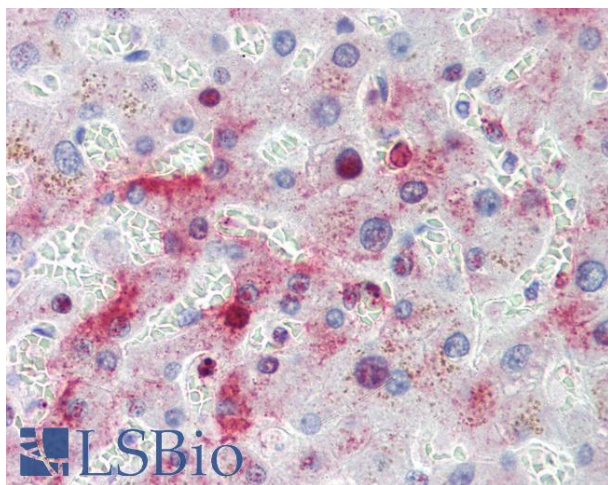
Druggable Genome, Stem cell - Pluripotency

**Protein Pathways:**

Glyoxylate and dicarboxylate metabolism, Metabolic pathways, One carbon pool by folate

**Product images:**

TA305850 (1 µg/ml) staining of Jurkat (A), MCF7 (B) and (2 µg/ml) MOLT4 (C) cell lysate (35 µg protein in RIPA buffer). Detected by chemiluminescence.



TA305850 (3.75 µg/ml) staining of paraffin embedded Human Liver. Steamed antigen retrieval with citrate buffer pH 6, AP-staining.