

Product datasheet for **TA305846**

SPHK1 Goat Polyclonal Antibody

Product data:

Product Type:	Primary Antibodies
Applications:	WB
Recommended Dilution:	WB: 2-3ug/ml.
Reactivity:	Human (Expected from sequence similarity: Mouse, Rat, Dog, Cow)
Host:	Goat
Isotype:	IgG
Clonality:	Polyclonal
Immunogen:	Peptide with sequence C-DVDLESEKYRRLGE, from the internal region of the protein sequence according to NP_068807.2; NP_892010.1.
Formulation:	0.5 mg/ml in Tris saline, 0.02% sodium azide, pH7.3 with 0.5% bovine serum albumin
Concentration:	lot specific
Purification:	Purified from goat serum by ammonium sulphate precipitation followed by antigen affinity chromatography using the immunizing peptide. Supplied at 0.5 mg/ml in Tris saline, 0.02% sodium azide, pH7.3 with 0.5% bovine serum albumin. Aliquot and store at -20C. Minimize freezing and thawing.
Conjugation:	Unconjugated
Storage:	Store at -20°C as received.
Stability:	Stable for 12 months from date of receipt.
Gene Name:	sphingosine kinase 1
Database Link:	NP_001136073 Entrez Gene 20698 MouseEntrez Gene 170897 RatEntrez Gene 483329 DogEntrez Gene 8877 Human Q9NYA1



[View online »](#)

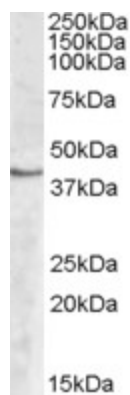
Background: Sphingosine-1-phosphate (SPP) is a novel lipid messenger with both intracellular and extracellular functions. Intracellularly, it regulates proliferation and survival, and extracellularly, it is a ligand for EDG1 (MIM 601974). Various stimuli increase cellular levels of SPP by activation of sphingosine kinase (SPHK), the enzyme that catalyzes the phosphorylation of sphingosine. Competitive inhibitors of SPHK block formation of SPP and selectively inhibit cellular proliferation induced by a variety of factors, including platelet-derived growth factor (e.g., MIM 173430) and serum. [supplied by OMIM]

Synonyms: SPHK

Protein Families: Druggable Genome

Protein Pathways: Calcium signaling pathway, Fc gamma R-mediated phagocytosis, Metabolic pathways, Sphingolipid metabolism, VEGF signaling pathway

Product images:



TA305846 (2ug/ml) staining of Human Peripheral Blood Mononucleocyte lysate (35ug protein in RIPA buffer). Primary incubation was 1 hour. Detected by chemiluminescence.