

Product datasheet for **TA305828**

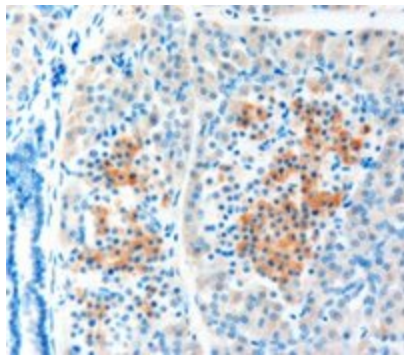
LRP5 Goat Polyclonal Antibody

Product data:

| | |
|-----------------------|---|
| Product Type: | Primary Antibodies |
| Applications: | IHC |
| Recommended Dilution: | IHC: 3-6ug/ml. |
| Reactivity: | Human (Expected from sequence similarity: Mouse, Rat) |
| Host: | Goat |
| Isotype: | IgG |
| Clonality: | Polyclonal |
| Immunogen: | Peptide with sequence C-ERVEKTTGDKRT, from the internal region of the protein sequence according to NP_002326.2. |
| Formulation: | 0.5 mg/ml in Tris saline, 0.02% sodium azide, pH7.3 with 0.5% bovine serum albumin |
| Concentration: | lot specific |
| Purification: | Purified from goat serum by ammonium sulphate precipitation followed by antigen affinity chromatography using the immunizing peptide. Supplied at 0.5 mg/ml in Tris saline, 0.02% sodium azide, pH7.3 with 0.5% bovine serum albumin. Aliquot and store at -20C. Minimize freezing and thawing. |
| Conjugation: | Unconjugated |
| Storage: | Store at -20°C as received. |
| Stability: | Stable for 12 months from date of receipt. |
| Gene Name: | LDL receptor related protein 5 |
| Database Link: | NP_002326 Entrez Gene 16973 Mouse Entrez Gene 293649 Rat Entrez Gene 4041 Human O75197 |
| Synonyms: | BMND1; EVR1; EVR4; HBM; LR3; LRP-5; LRP7; OPPG; OPS; OPTA1; VBCH2 |
| Protein Families: | Druggable Genome, Transmembrane |
| Protein Pathways: | Wnt signaling pathway |



[View online »](#)

Product images:

TA305828 (1ug/ml) staining of paraffin embedded Human Pancreas shows staining of cytoplasm in some cells of the islets of Langerhans.