

## Product datasheet for **TA305825**

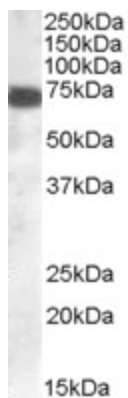
### ZDHHC13 Goat Polyclonal Antibody

#### Product data:

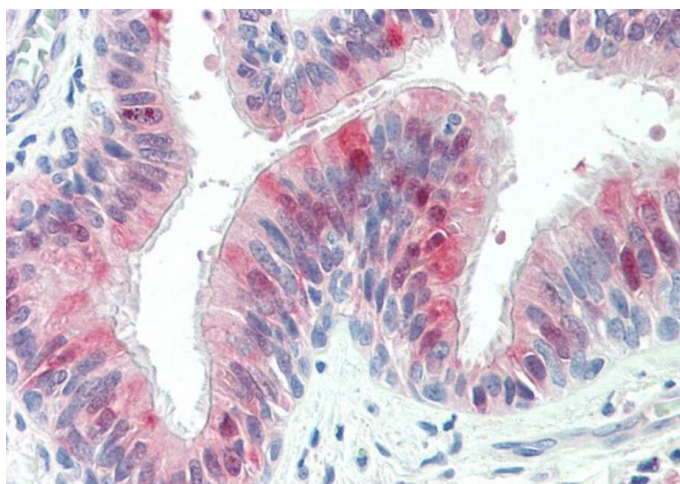
Product Type:	Primary Antibodies
Applications:	IHC, WB
Recommended Dilution:	WB: 1-3ug/ml.IHC:5µg/m
Reactivity:	Human (Expected from sequence similarity: Mouse, Rat)
Host:	Goat
Isotype:	IgG
Clonality:	Polyclonal
Immunogen:	Peptide with sequence C-FHPAREKVLRSV, from the C Terminus of the protein sequence according to NP_061901.2; NP_001001483.1.
Formulation:	0.5 mg/ml in Tris saline, 0.02% sodium azide, pH7.3 with 0.5% bovine serum albumin
Concentration:	lot specific
Purification:	Purified from goat serum by ammonium sulphate precipitation followed by antigen affinity chromatography using the immunizing peptide. Supplied at 0.5 mg/ml in Tris saline, 0.02% sodium azide, pH7.3 with 0.5% bovine serum albumin. Aliquot and store at -20C. Minimize freezing and thawing.
Conjugation:	Unconjugated
Storage:	Store at -20°C as received.
Stability:	Stable for 12 months from date of receipt.
Gene Name:	zinc finger DHHC-type containing 13
Database Link:	<a href="#">NP_001001483</a> <a href="#">Entrez Gene 243983 MouseEntrez Gene 365252 RatEntrez Gene 54503 Human Q8IUH4</a>
Synonyms:	HIP3RP; HIP14L
Protein Families:	Transmembrane



[View online »](#)

**Product images:**

TA305825 (0.1ug/ml) staining of Human Cerebellum lysate (35ug protein in RIPA buffer). Primary incubation was 1 hour. Detected by chemiluminescence.



TA305825 (5ug/ml) staining of paraffin embedded Human Lung. Steamed antigen retrieval with citrate buffer pH 6, AP-staining.