

Product datasheet for **TA305821**

Syntrophin gamma 2 (SNTG2) Goat Polyclonal Antibody

Product data:

Product Type:	Primary Antibodies
Applications:	WB
Recommended Dilution:	WB: 0.1-0.3ug/ml.
Reactivity:	Human
Host:	Goat
Isotype:	IgG
Clonality:	Polyclonal
Immunogen:	Peptide with sequence C-DSQSLARKYMYSS, from the C Terminus of the protein sequence according to NP_061841.2.
Formulation:	0.5 mg/ml in Tris saline, 0.02% sodium azide, pH7.3 with 0.5% bovine serum albumin
Concentration:	lot specific
Purification:	Purified from goat serum by ammonium sulphate precipitation followed by antigen affinity chromatography using the immunizing peptide. Supplied at 0.5 mg/ml in Tris saline, 0.02% sodium azide, pH7.3 with 0.5% bovine serum albumin. Aliquot and store at -20C. Minimize freezing and thawing.
Conjugation:	Unconjugated
Storage:	Store at -20°C as received.
Stability:	Stable for 12 months from date of receipt.
Gene Name:	syntrophin gamma 2
Database Link:	NP_061841 Entrez Gene 54221 Human Q9NY99



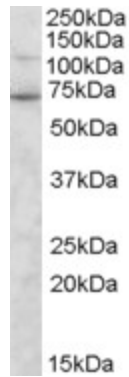
[View online »](#)

Background:

This gene encodes a protein belonging to the syntrophin family. Syntrophins are cytoplasmic peripheral membrane proteins that bind to components of mechanosensitive sodium channels and the extreme carboxy-terminal domain of dystrophin and dystrophin-related proteins. The PDZ domain of this protein product interacts with a protein component of a mechanosensitive sodium channel that affects channel gating. Absence or reduction of this protein product has been associated with Duchenne muscular dystrophy. There is evidence of alternative splicing yet the full-length nature of these variants has not been described. COMPLETENESS: complete on the 3' end.

Synonyms:

G2SYN; SYN5

Product images:

TA305821 (0.3ug/ml) staining of Human Duodenum lysate (35ug protein in RIPA buffer). Primary incubation was 1 hour. Detected by chemiluminescence.