

## Product datasheet for **TA305819**

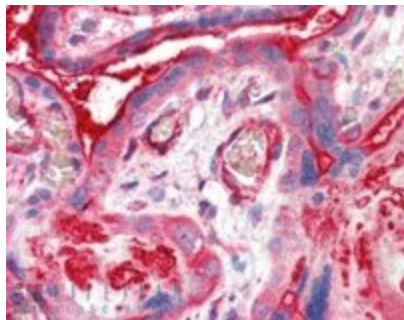
### **Centaurin alpha 2 (ADAP2) Goat Polyclonal Antibody**

#### **Product data:**

<b>Product Type:</b>	Primary Antibodies
<b>Applications:</b>	IHC
<b>Recommended Dilution:</b>	IHC: 5-10ug/ml.
<b>Reactivity:</b>	Human
<b>Host:</b>	Goat
<b>Isotype:</b>	IgG
<b>Clonality:</b>	Polyclonal
<b>Immunogen:</b>	Peptide with sequence C-RLTASTESGRSSR, from the C Terminus of the protein sequence according to NP_060874.1.
<b>Formulation:</b>	0.5 mg/ml in Tris saline, 0.02% sodium azide, pH7.3 with 0.5% bovine serum albumin
<b>Concentration:</b>	lot specific
<b>Purification:</b>	Purified from goat serum by ammonium sulphate precipitation followed by antigen affinity chromatography using the immunizing peptide. Supplied at 0.5 mg/ml in Tris saline, 0.02% sodium azide, pH7.3 with 0.5% bovine serum albumin. Aliquot and store at -20C. Minimize freezing and thawing.
<b>Conjugation:</b>	Unconjugated
<b>Storage:</b>	Store at -20°C as received.
<b>Stability:</b>	Stable for 12 months from date of receipt.
<b>Gene Name:</b>	ArfGAP with dual PH domains 2
<b>Database Link:</b>	<a href="#">NP_060874</a> <a href="#">Entrez Gene 55803 Human</a> <a href="#">Q9NPF8</a>
<b>Synonyms:</b>	cent-b; CENTA2; HSA272195



[View online »](#)

**Product images:**

TA305819 (5ug/ml) staining of paraffin embedded Human Placenta. Steamed antigen retrieval with citrate buffer pH 6, AP-staining.