

## Product datasheet for **TA305816**

### KDM2B Goat Polyclonal Antibody

#### Product data:

Product Type:	Primary Antibodies
Applications:	IHC, PEP-ELISA
Recommended Dilution:	WB: 1-3ug/ml.
Reactivity:	Human (Expected from sequence similarity: Mouse, Rat, Dog)
Host:	Goat
Isotype:	IgG
Clonality:	Polyclonal
Immunogen:	Peptide with sequence C-FGQVEEKLLQKLS, from the C Terminus of the protein sequence according to NP_115979.3.
Formulation:	0.5 mg/ml in Tris saline, 0.02% sodium azide, pH7.3 with 0.5% bovine serum albumin
Concentration:	lot specific
Purification:	Purified from goat serum by ammonium sulphate precipitation followed by antigen affinity chromatography using the immunizing peptide. Supplied at 0.5 mg/ml in Tris saline, 0.02% sodium azide, pH7.3 with 0.5% bovine serum albumin. Aliquot and store at -20C. Minimize freezing and thawing.
Conjugation:	Unconjugated
Storage:	Store at -20°C as received.
Stability:	Stable for 12 months from date of receipt.
Gene Name:	lysine demethylase 2B
Database Link:	<a href="#">NP_001005366</a> <a href="#">Entrez Gene 30841</a> <a href="#">MouseEntrez Gene 304495</a> <a href="#">RatEntrez Gene 486262</a> <a href="#">DogEntrez Gene 84678</a> <a href="#">Human</a> <a href="#">Q8NHM5</a>



[View online »](#)

**Background:**

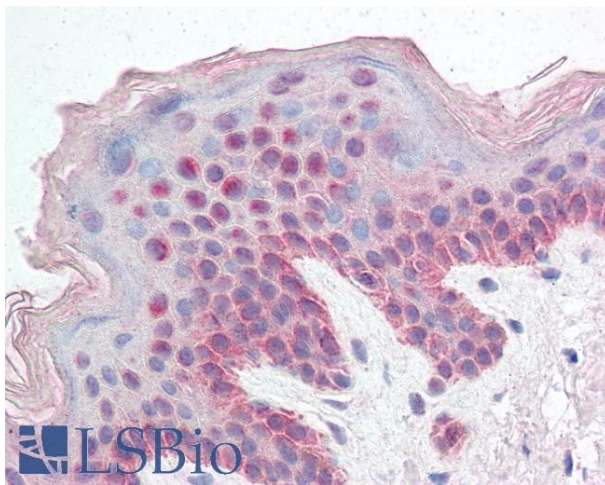
This gene encodes a member of the F-box protein family which is characterized by an approximately 40 amino acid motif, the F-box. The F-box proteins constitute one of the four subunits of ubiquitin protein ligase complex called SCFs (SKP1-cullin-F-box), which function in phosphorylation-dependent ubiquitination. The F-box proteins are divided into 3 classes: Fbws containing WD-40 domains, Fbls containing leucine-rich repeats, and Fbxs containing either different protein-protein interaction modules or no recognizable motifs. The protein encoded by this gene belongs to the Fbls class. Multiple alternatively spliced transcript variants have been found for this gene, but the full-length nature of some variants has not been determined. [provided by RefSeq]

**Synonyms:**

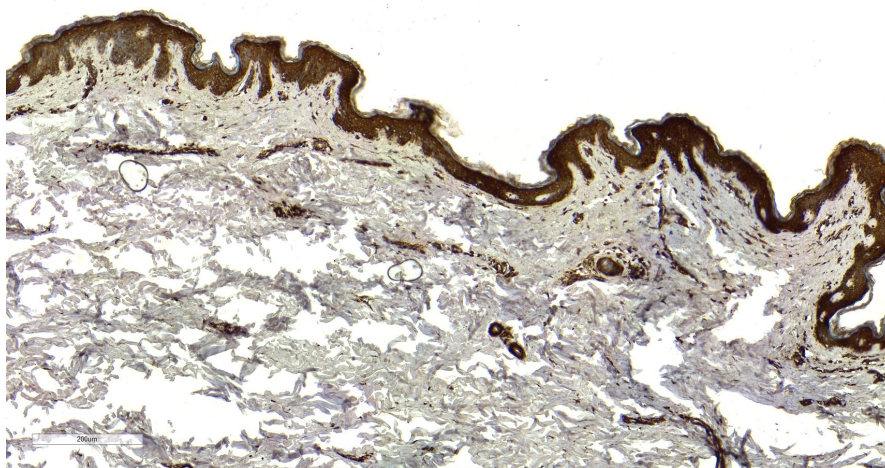
CXXC2; Fbl10; FBXL10; JHDM1B; PCCX2

**Protein Families:**

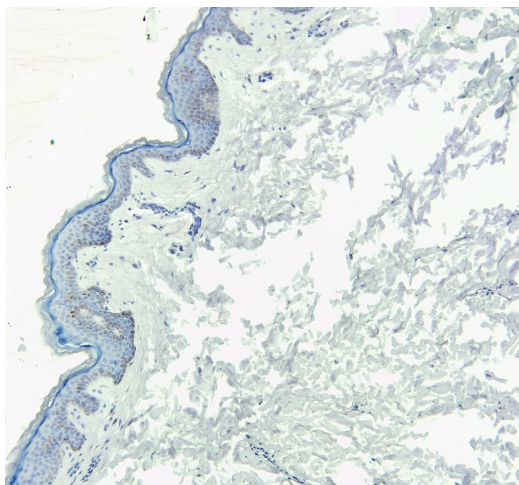
Druggable Genome

**Product images:**

TA305816 (5µg/ml) staining of paraffin embedded Human Skin. Steamed antigen retrieval with citrate buffer pH 6, AP-staining.



TA305816 (7µg/ml) staining of paraffin embedded Human Skin. Heat induced antigen retrieval with citrate buffer pH 6, HRP-staining.



TA305816 Negative Control showing staining of paraffin embedded Human Skin, with no primary antibody.