

## Product datasheet for **TA305812**

### ERC1 Goat Polyclonal Antibody

#### Product data:

Product Type:	Primary Antibodies
Applications:	WB
Recommended Dilution:	WB: 0.1-0.3ug/ml.
Reactivity:	Human (Expected from sequence similarity: Mouse, Rat, Dog, Cow)
Host:	Goat
Isotype:	IgG
Clonality:	Polyclonal
Immunogen:	Peptide with sequence YGSARSVGKVEPS-C, from the N Terminus of the protein sequence according to NP_829883.1; NP_829884.1.
Formulation:	0.5 mg/ml in Tris saline, 0.02% sodium azide, pH7.3 with 0.5% bovine serum albumin
Concentration:	lot specific
Purification:	Purified from goat serum by ammonium sulphate precipitation followed by antigen affinity chromatography using the immunizing peptide. Supplied at 0.5 mg/ml in Tris saline, 0.02% sodium azide, pH7.3 with 0.5% bovine serum albumin. Aliquot and store at -20C. Minimize freezing and thawing.
Conjugation:	Unconjugated
Storage:	Store at -20°C as received.
Stability:	Stable for 12 months from date of receipt.
Gene Name:	ELKS/RAB6-interacting/CAST family member 1
Database Link:	<a href="#">NP_829883</a> <a href="#">Entrez Gene 111173</a> <a href="#">MouseEntrez Gene 266806</a> <a href="#">RatEntrez Gene 486753</a> <a href="#">DogEntrez Gene 23085</a> <a href="#">Human Q8IUD2</a>
Background:	The protein encoded by this gene is a member of a family of RIM-binding proteins. RIMs are active zone proteins that regulate neurotransmitter release. This gene has been found fused to the receptor-type tyrosine kinase gene RET by gene rearrangement due to the translocation t(10;12)(q11;p13). Multiple transcript variants encoding different isoforms have been found for this gene. [provided by RefSeq]

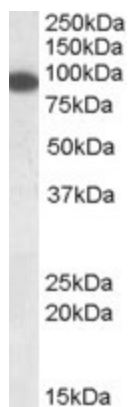


[View online »](#)

Synonyms: Cast2; ELKS; ERC-1; RAB6IP2

Protein Families: Druggable Genome

### Product images:



TA305812 (0.1ug/ml) staining of Human Pancreas lysate (35ug protein in RIPA buffer). Primary incubation was 1 hour. Detected by chemiluminescence.