

Product datasheet for **TA305811**

MAGOH Goat Polyclonal Antibody

Product data:

Product Type:	Primary Antibodies
Applications:	WB
Recommended Dilution:	WB: 1-3ug/ml.
Reactivity:	Human (Expected from sequence similarity: Mouse, Rat, Dog, Cow)
Host:	Goat
Isotype:	IgG
Clonality:	Polyclonal
Immunogen:	Peptide with sequence C-SLIGLHFKIKPI, from the C Terminus of the protein sequence according to NP_002361.1.
Formulation:	0.5 mg/ml in Tris saline, 0.02% sodium azide, pH7.3 with 0.5% bovine serum albumin
Concentration:	lot specific
Purification:	Purified from goat serum by ammonium sulphate precipitation followed by antigen affinity chromatography using the immunizing peptide. Supplied at 0.5 mg/ml in Tris saline, 0.02% sodium azide, pH7.3 with 0.5% bovine serum albumin. Aliquot and store at -20C. Minimize freezing and thawing.
Conjugation:	Unconjugated
Storage:	Store at -20°C as received.
Stability:	Stable for 12 months from date of receipt.
Gene Name:	mago homolog, exon junction complex core component
Database Link:	NP_002361 Entrez Gene 17149 MouseEntrez Gene 298385 RatEntrez Gene 479562 DogEntrez Gene 4116 Human P61326
Background:	Drosophila that have mutations in their mago nashi (grandchildless) gene produce progeny with defects in germlasm assembly and germline development. This gene encodes the mammalian mago nashi homolog. In mammals, mRNA expression is not limited to the germ plasm, but is expressed ubiquitously in adult tissues and can be induced by serum stimulation of quiescent fibroblasts.

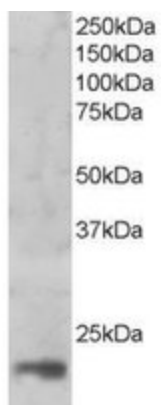


[View online »](#)

Synonyms: MAGOH1; MAGOHA

Protein Pathways: Spliceosome

Product images:



TA305811 (1ug/ml) staining of nuclear HeLa lysate (35ug protein in RIPA buffer). Primary incubation was 1 hour. Detected by chemiluminescence.