

Product datasheet for **TA305809**

MIph Goat Polyclonal Antibody

Product data:

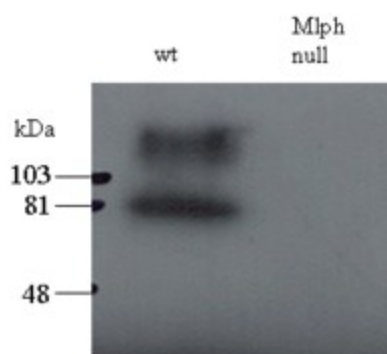
Product Type:	Primary Antibodies
Applications:	GST-pull down, ICC, IF, PEP-ELISA, WB
Recommended Dilution:	WB: 0.5-2ug/ml. IF: 0.5ug/ml.
Reactivity:	Mouse (Expected from sequence similarity: Rat)
Host:	Goat
Isotype:	IgG
Clonality:	Polyclonal
Immunogen:	Peptide with sequence C-ARHIFAKPVMAQQP, from the C Terminus of the protein sequence according to NP_443748.2.
Formulation:	0.5 mg/ml in Tris saline, 0.02% sodium azide, pH7.3 with 0.5% bovine serum albumin
Concentration:	lot specific
Purification:	Purified from goat serum by ammonium sulphate precipitation followed by antigen affinity chromatography using the immunizing peptide. Supplied at 0.5 mg/ml in Tris saline, 0.02% sodium azide, pH7.3 with 0.5% bovine serum albumin. Aliquot and store at -20C. Minimize freezing and thawing.
Conjugation:	Unconjugated
Storage:	Store at -20°C as received.
Stability:	Stable for 12 months from date of receipt.
Gene Name:	melanophilin
Database Link:	NP_443748 Entrez Gene 316620 Rat Entrez Gene 171531 Mouse Q91V27
Background:	This gene encodes a member of the SWI/SNF family. Members of this family have helicase and ATPase activities and are thought to regulate transcription of certain genes by altering the chromatin structure around those genes. The encoded protein contains a RING finger DNA binding motif. Two transcript variants encoding the same protein have been found for this gene. However, use of an alternative translation start site produces an isoform that is truncated at the N-terminus compared to the full-length protein. [provided by RefSeq]



[View online »](#)

Synonyms: exophilin-3; I(1)-3Rk; I1Rk3; In; melanophilin; MGC2771; MGC59733; Slac-2a; SlaC2-a; SLAC2A

Product images:



TA305809 staining (0.5ug/ml) of total melanocyte PNS (200ug per lane) of wild-type and leaner (Mlph null) mice. The upper band may be the stacking-separating gel interface. Data kindly provided by A N Hume, Imperial College.