

## Product datasheet for **TA305808**

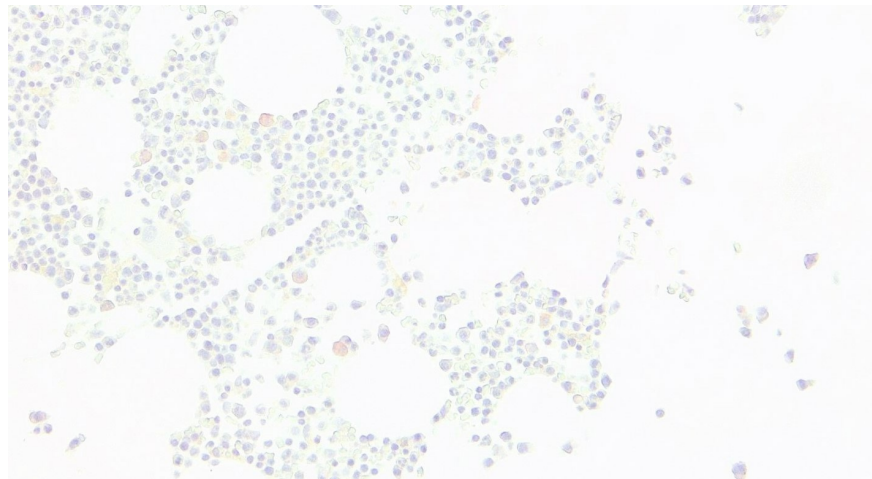
### **KLF1 Goat Polyclonal Antibody**

#### **Product data:**

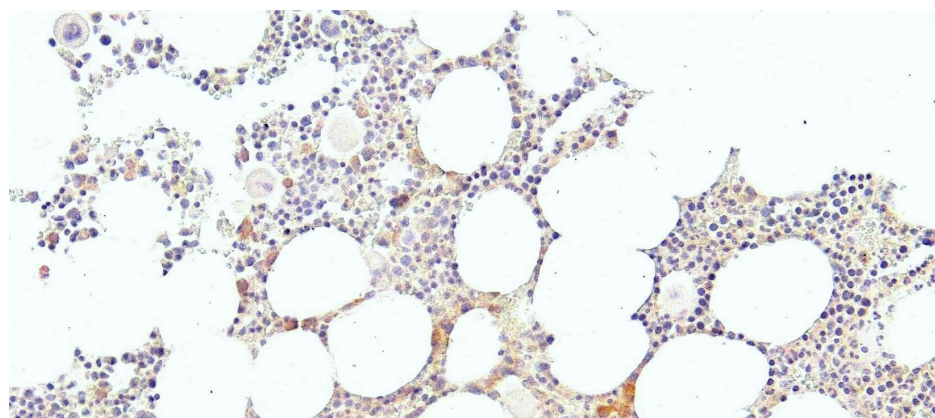
<b>Product Type:</b>	Primary Antibodies
<b>Applications:</b>	IHC
<b>Recommended Dilution:</b>	ELISA: 1:32000.WB:1ug/ml.IHC:5µg/ml
<b>Reactivity:</b>	Human, Mouse (Expected from sequence similarity: Dog, Pig, Cow)
<b>Host:</b>	Goat
<b>Isotype:</b>	IgG
<b>Clonality:</b>	Polyclonal
<b>Immunogen:</b>	Peptide with sequence ATAETALPSISLT-C, from the N Terminus of the protein sequence according to NP_006554.1.
<b>Formulation:</b>	0.5 mg/ml in Tris saline, 0.02% sodium azide, pH7.3 with 0.5% bovine serum albumin
<b>Concentration:</b>	lot specific
<b>Purification:</b>	Purified from goat serum by ammonium sulphate precipitation followed by antigen affinity chromatography using the immunizing peptide. Supplied at 0.5 mg/ml in Tris saline, 0.02% sodium azide, pH7.3 with 0.5% bovine serum albumin. Aliquot and store at -20C. Minimize freezing and thawing.
<b>Conjugation:</b>	Unconjugated
<b>Storage:</b>	Store at -20°C as received.
<b>Stability:</b>	Stable for 12 months from date of receipt.
<b>Gene Name:</b>	Kruppel-like factor 1 (erythroid)
<b>Database Link:</b>	<a href="#">NP_006554</a> <a href="#">Entrez Gene 16596 Mouse</a> <a href="#">Entrez Gene 484924 Dog</a> <a href="#">Entrez Gene 10661 Human</a> <a href="#">Q13351</a>
<b>Synonyms:</b>	CDAN4; EKLf; HBFQTL6; INLU
<b>Protein Families:</b>	Transcription Factors



[View online »](#)

**Product images:**

TA305808 (4µg/ml) staining of paraffin embedded Human Bone Marrow. Heat induced antigen retrieval with citrate buffer Ph 6, HRP-staining.



TA305808 Negative Control showing staining of paraffin embedded Human Bone Marrow, with no primary antibody.