

Product datasheet for **TA305800**

Arginase 1 (ARG1) Goat Polyclonal Antibody

Product data:

Product Type:	Primary Antibodies
Applications:	WB
Recommended Dilution:	WB: 0.01-0.03 µg/ml.
Reactivity:	Human, Mouse, Rat, Pig (Expected from sequence similarity: Dog, Cow)
Host:	Goat
Isotype:	IgG
Clonality:	Polyclonal
Immunogen:	Peptide with sequence CFGLAREGNHKPID, from the C Terminus of the protein sequence according to NP_000036.2.
Formulation:	0.5 mg/ml in Tris saline, 0.02% sodium azide, pH7.3 with 0.5% bovine serum albumin
Purification:	Purified from goat serum by ammonium sulphate precipitation followed by antigen affinity chromatography using the immunizing peptide. Supplied at 0.5 mg/ml in Tris saline, 0.02% sodium azide, pH7.3 with 0.5% bovine serum albumin. Aliquot and store at -20C. Minimize freezing and thawing.
Conjugation:	Unconjugated
Storage:	Store at -20°C as received.
Stability:	Stable for 12 months from date of receipt.
Gene Name:	arginase 1
Database Link:	NP_000036 Entrez Gene 11846 Mouse Entrez Gene 29221 Rat Entrez Gene 474823 Dog Entrez Gene 383 Human P05089
Background:	Arginase catalyzes the hydrolysis of arginine to ornithine and urea. At least two isoforms of mammalian arginase exist (types I and II) which differ in their tissue distribution, subcellular localization, immunologic crossreactivity and physiologic function. The type I isoform encoded by this gene, is a cytosolic enzyme and expressed predominantly in the liver as a component of the urea cycle. Inherited deficiency of this enzyme results in argininemia, an autosomal recessive disorder characterized by hyperammonemia. [provided by RefSeq]



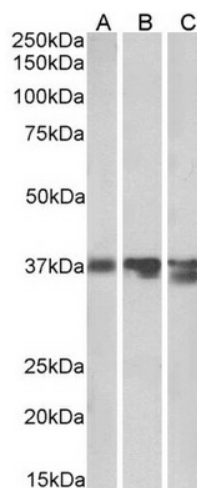
[View online »](#)

Synonyms: arginase; arginase 1; liver; liver-type arginase; OTTHUMP00000017209; type I arginase

Protein Families: Druggable Genome

Protein Pathways: Arginine and proline metabolism, Metabolic pathways

Product images:



TA305800 (0.03 ug/ml) staining of Pig (A), Mouse (B) and Rat (C) Liver lysates (35 ug protein in RIPA buffer). Primary incubation was 1 hour. Detected by chemiluminescence.