

Product datasheet for **TA305792**

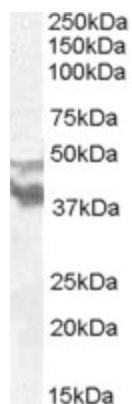
DNAAF4 Goat Polyclonal Antibody

Product data:

Product Type:	Primary Antibodies
Applications:	PEP-ELISA, WB
Recommended Dilution:	WB: 0.5-1.5ug/ml.
Reactivity:	Human (Expected from sequence similarity: Dog)
Host:	Goat
Isotype:	IgG
Clonality:	Polyclonal
Immunogen:	Peptide with sequence PLQVSDYSWQQTKT-C, from the N Terminus of the protein sequence according to NP_570722.2; NP_001028731.1; NP_001028732.1.
Formulation:	0.5 mg/ml in Tris saline, 0.02% sodium azide, pH7.3 with 0.5% bovine serum albumin
Concentration:	lot specific
Purification:	Purified from goat serum by ammonium sulphate precipitation followed by antigen affinity chromatography using the immunizing peptide. Supplied at 0.5 mg/ml in Tris saline, 0.02% sodium azide, pH7.3 with 0.5% bovine serum albumin. Aliquot and store at -20C. Minimize freezing and thawing.
Conjugation:	Unconjugated
Storage:	Store at -20°C as received.
Stability:	Stable for 12 months from date of receipt.
Gene Name:	dyslexia susceptibility 1 candidate 1
Database Link:	NP_001028731 Entrez Gene 487567 Dog Entrez Gene 161582 Human Q8WXU2
Synonyms:	CILD25; DNAAF4; DYX1; DYXC1; EKN1; RD



[View online »](#)

Product images:

TA305792 (0.5ug/ml) staining of Human Brain (Frontal Cortex) lysate (35ug protein in RIPA buffer). Primary incubation was 1 hour. Detected by chemiluminescence.