

Product datasheet for **TA305788**

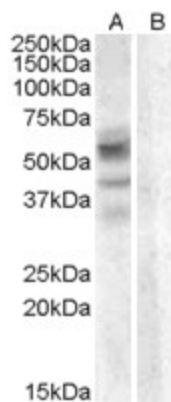
Arylsulfatase D (ARSD) Goat Polyclonal Antibody

Product data:

| | |
|-----------------------|---|
| Product Type: | Primary Antibodies |
| Applications: | WB |
| Recommended Dilution: | WB: 0.01-0.03ug/ml. |
| Reactivity: | Human |
| Host: | Goat |
| Isotype: | IgG |
| Clonality: | Polyclonal |
| Immunogen: | Peptide with sequence C-DASNGYRALQWNA, from the internal region of the protein sequence according to NP_001660.2; NP_033667.2. |
| Formulation: | 0.5 mg/ml in Tris saline, 0.02% sodium azide, pH7.3 with 0.5% bovine serum albumin |
| Concentration: | lot specific |
| Purification: | Purified from goat serum by ammonium sulphate precipitation followed by antigen affinity chromatography using the immunizing peptide. Supplied at 0.5 mg/ml in Tris saline, 0.02% sodium azide, pH7.3 with 0.5% bovine serum albumin. Aliquot and store at -20C. Minimize freezing and thawing. |
| Conjugation: | Unconjugated |
| Storage: | Store at -20°C as received. |
| Stability: | Stable for 12 months from date of receipt. |
| Gene Name: | arylsulfatase D |
| Database Link: | NP_001660 Entrez Gene 414 Human P51689 |
| Background: | The protein encoded by this gene is a member of the sulfatase family. Sulfatases are essential for the correct composition of bone and cartilage matrix. This encoded protein is postranslationally glycosylated and localized to the lysosome. Two transcript variants encoding different isoforms have been found for this gene. [provided by RefSeq] |
| Synonyms: | ASD |
| Protein Families: | Druggable Genome, Transmembrane |



[View online »](#)

Product images:

TA305788 (0.3ug/ml) staining of A459 lysate (35ug protein in RIPA buffer) with (B) and without (A) blocking with the immunising peptide. Primary incubation was 1 hour. Detected by chemiluminescence.