

## Product datasheet for **TA305785**

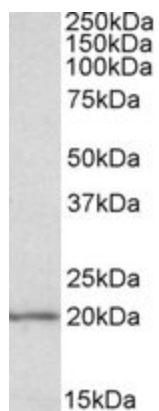
### EIF5A Goat Polyclonal Antibody

#### Product data:

|                       |   |
|-----------------------|---|
| Product Type:         | Primary Antibodies  |
| Applications:         | WB  |
| Recommended Dilution: | WB: 1-3ug/ml.   |
| Reactivity:           | Human   |
| Host:                 | Goat  |
| Isotype:              | IgG   |
| Clonality:            | Polyclonal  |
| Immunogen:            | Peptide with sequence C-RPPHRASFLKRLESK, from the internal region (near N Terminus) of the protein sequence according to NP_001137232.1.  |
| Formulation:          | 0.5 mg/ml in Tris saline, 0.02% sodium azide, pH7.3 with 0.5% bovine serum albumin  |
| Concentration:        | lot specific  |
| Purification:         | Purified from goat serum by ammonium sulphate precipitation followed by antigen affinity chromatography using the immunizing peptide. Supplied at 0.5 mg/ml in Tris saline, 0.02% sodium azide, pH7.3 with 0.5% bovine serum albumin. Aliquot and store at -20C. Minimize freezing and thawing. |
| Conjugation:          | Unconjugated  |
| Storage:              | Store at -20°C as received.   |
| Stability:            | Stable for 12 months from date of receipt.  |
| Gene Name:            | eukaryotic translation initiation factor 5A   |
| Database Link:        | <a href="#">NP_001137232</a><br><a href="#">Entrez Gene 1984 Human P63241</a>   |
| Synonyms:             | EIF-5A; EIF5A1; eIF5A1  |



[View online »](#)

**Product images:**

TA305785 (0.1ug/ml) staining of MOLT4 lysate (35ug protein in RIPA buffer). Primary incubation was 1 hour. Detected by chemiluminescence.