

## Product datasheet for **TA305779**

### Heme oxygenase 2 (HMOX2) Goat Polyclonal Antibody

#### Product data:

Product Type:	Primary Antibodies
Applications:	IHC, WB
Recommended Dilution:	WB: 0.3-1ug/ml, IHC: 2-4ug/ml
Reactivity:	Human (Expected from sequence similarity: Mouse, Cow)
Host:	Goat
Isotype:	IgG
Clonality:	Polyclonal
Immunogen:	Peptide with sequence C-DQAGSTLARETLED, from the internal region of the protein sequence according to NP_002125.3.
Formulation:	0.5 mg/ml in Tris saline, 0.02% sodium azide, pH7.3 with 0.5% bovine serum albumin
Concentration:	lot specific
Purification:	Purified from goat serum by ammonium sulphate precipitation followed by antigen affinity chromatography using the immunizing peptide. Supplied at 0.5 mg/ml in Tris saline, 0.02% sodium azide, pH7.3 with 0.5% bovine serum albumin. Aliquot and store at -20C. Minimize freezing and thawing.
Conjugation:	Unconjugated
Storage:	Store at -20°C as received.
Stability:	Stable for 12 months from date of receipt.
Gene Name:	heme oxygenase 2
Database Link:	<a href="#">NP_001120676</a> <a href="#">Entrez Gene 15369 Mouse</a> <a href="#">Entrez Gene 3163 Human</a> <a href="#">P30519</a>



[View online »](#)

**Background:**

Heme oxygenase, an essential enzyme in heme catabolism, cleaves heme to form biliverdin, which is subsequently converted to bilirubin by biliverdin reductase, and carbon monoxide, a putative neurotransmitter. Heme oxygenase activity is induced by its substrate heme and by various nonheme substances. Heme oxygenase occurs as 2 isozymes, an inducible heme oxygenase-1 and a constitutive heme oxygenase-2. HMOX1 and HMOX2 belong to the heme oxygenase family. Alternative splice variants encoding the same protein have been identified at this locus. [provided by RefSeq]

**Synonyms:**

HO-2

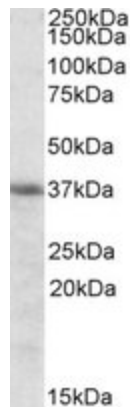
**Protein Families:**

Transmembrane

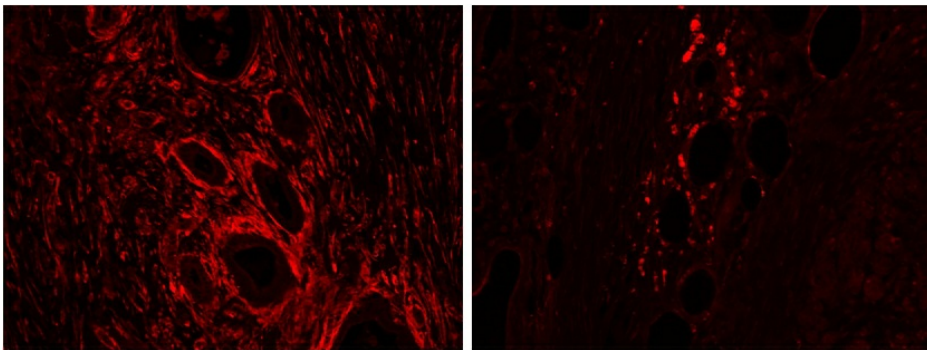
**Protein Pathways:**

Porphyrin and chlorophyll metabolism

**Product images:**



TA305779 (0.3ug/ml) staining of K562 cell lysate (35ug protein in RIPA buffer). Primary incubation was 1 hour. Detected by chemiluminescence.



TA305779 (2ug/ml) staining of paraffin embedded Human Pancreas: cancer (left), adjacent to cancer (right). Steamed antigen retrieval with citrate buffer pH 6, Alexa594-staining.