

Product datasheet for **TA305772**

PCK1 Goat Polyclonal Antibody

Product data:

Product Type:	Primary Antibodies
Applications:	IHC
Recommended Dilution:	IHC: 2-4ug/ml.
Reactivity:	Human (Expected from sequence similarity: Mouse, Rat, Dog, Pig, Cow)
Host:	Goat
Isotype:	IgG
Clonality:	Polyclonal
Immunogen:	Peptide with sequence C-HVNWFRKDKEGK, from the internal region of the protein sequence according to NP_002582.3.
Formulation:	0.5 mg/ml in Tris saline, 0.02% sodium azide, pH7.3 with 0.5% bovine serum albumin
Concentration:	lot specific
Purification:	Purified from goat serum by ammonium sulphate precipitation followed by antigen affinity chromatography using the immunizing peptide. Supplied at 0.5 mg/ml in Tris saline, 0.02% sodium azide, pH7.3 with 0.5% bovine serum albumin. Aliquot and store at -20C. Minimize freezing and thawing.
Conjugation:	Unconjugated
Storage:	Store at -20°C as received.
Stability:	Stable for 12 months from date of receipt.
Gene Name:	phosphoenolpyruvate carboxykinase 1
Database Link:	NP_002582 Entrez Gene 18534 MouseEntrez Gene 362282 RatEntrez Gene 403560 DogEntrez Gene 5105 Human P35558



[View online »](#)

Background:

This gene is a main control point for the regulation of gluconeogenesis. The cytosolic enzyme encoded by this gene, along with GTP, catalyzes the formation of phosphoenolpyruvate from oxaloacetate, with the release of carbon dioxide and GDP. The expression of this gene can be regulated by insulin, glucocorticoids, glucagon, cAMP, and diet. Defects in this gene are a cause of cytosolic phosphoenolpyruvate carboxykinase deficiency. A mitochondrial isozyme of the encoded protein also has been characterized. [provided by RefSeq]

Synonyms:

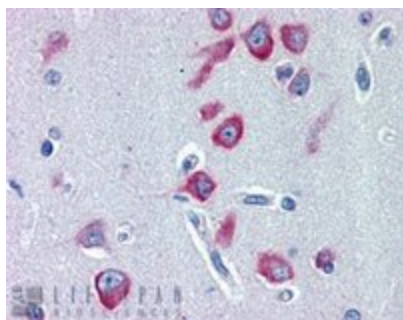
PEPCK-C; PEPCK1; PEPCKC

Protein Families:

Druggable Genome

Protein Pathways:

Adipocytokine signaling pathway, Citrate cycle (TCA cycle), Glycolysis / Gluconeogenesis, Insulin signaling pathway, Metabolic pathways, PPAR signaling pathway, Pyruvate metabolism

Product images:

TA305772 (2ug/ml) staining of paraffin embedded Human Cerebral Cortex. Steamed antigen retrieval with citrate buffer pH 6, AP-staining.