

Product datasheet for **TA305764**

CPT1B Goat Polyclonal Antibody

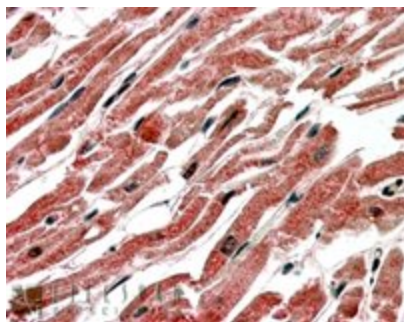
Product data:

Product Type:	Primary Antibodies
Applications:	IHC
Recommended Dilution:	IHC: 3-5ug/ml.
Reactivity:	Human
Host:	Goat
Isotype:	IgG
Clonality:	Polyclonal
Immunogen:	Peptide with sequence C-DIADLFQVPKAYS, from the C Terminus of the protein sequence according to NP_689452.1; NP_689451.1; NP_004368.1; NP_001138609.1; NP_001138607.1; NP_001138606.1; NP_001138608.1.
Formulation:	0.5 mg/ml in Tris saline, 0.02% sodium azide, pH7.3 with 0.5% bovine serum albumin
Concentration:	lot specific
Purification:	Purified from goat serum by ammonium sulphate precipitation followed by antigen affinity chromatography using the immunizing peptide. Supplied at 0.5 mg/ml in Tris saline, 0.02% sodium azide, pH7.3 with 0.5% bovine serum albumin. Aliquot and store at -20C. Minimize freezing and thawing.
Conjugation:	Unconjugated
Storage:	Store at -20°C as received.
Stability:	Stable for 12 months from date of receipt.
Gene Name:	carnitine palmitoyltransferase 1B
Database Link:	NP_689453 Entrez Gene 1375 Human Q92523



[View online »](#)

Background:	The protein encoded by this gene, a member of the carnitine/choline acetyltransferase family, is the rate-controlling enzyme of the long-chain fatty acid beta-oxidation pathway in muscle mitochondria. This enzyme is required for the net transport of long-chain fatty acyl-CoAs from the cytoplasm into the mitochondria. Multiple transcript variants encoding different isoforms have been found for this gene, and one of the transcripts is bicistronic. [provided by RefSeq]
Synonyms:	CPT1-M; FLJ55729; FLJ58750; KIAA1670; M-CPT1; MCCPT1
Protein Families:	Druggable Genome, Transmembrane
Protein Pathways:	Adipocytokine signaling pathway, Fatty acid metabolism, PPAR signaling pathway

Product images:

TA305764 (3.8ug/ml) staining of paraffin embedded Human Heart. Steamed antigen retrieval with citrate buffer pH 6, AP-staining.