

Product datasheet for **TA305762**

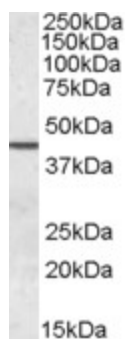
Septin 2 (SEPT2) Goat Polyclonal Antibody

Product data:

Product Type:	Primary Antibodies
Applications:	WB
Recommended Dilution:	WB: 0.05-0.2ug/ml.
Reactivity:	Human (Expected from sequence similarity: Mouse, Rat, Cow)
Host:	Goat
Isotype:	IgG
Clonality:	Polyclonal
Immunogen:	Peptide with sequence SKQQPTQFINPET-C, from the N terminus of the protein sequence according to NP_001008491.1.
Formulation:	0.5 mg/ml in Tris saline, 0.02% sodium azide, pH7.3 with 0.5% bovine serum albumin
Concentration:	lot specific
Purification:	Purified from goat serum by ammonium sulphate precipitation followed by antigen affinity chromatography using the immunizing peptide. Supplied at 0.5 mg/ml in Tris saline, 0.02% sodium azide, pH7.3 with 0.5% bovine serum albumin. Aliquot and store at -20C. Minimize freezing and thawing.
Conjugation:	Unconjugated
Storage:	Store at -20°C as received.
Stability:	Stable for 12 months from date of receipt.
Gene Name:	septin 2
Database Link:	NP_001008491 Entrez Gene 18000 Mouse Entrez Gene 117515 Rat Entrez Gene 4735 Human Q15019
Synonyms:	DIFF6; hNedd5; NEDD-5; NEDD5; Pnut13



[View online »](#)

Product images:

TA305762 (0.05ug/ml) staining of Human Testis lysate (35ug protein in RIPA buffer). Primary incubation was 1 hour. Detected by chemiluminescence.