

Product datasheet for **TA305761**

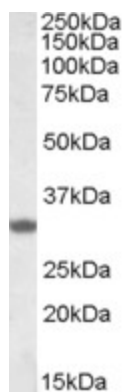
FHL3 Goat Polyclonal Antibody

Product data:

Product Type:	Primary Antibodies
Applications:	WB
Recommended Dilution:	WB: 1-3ug/ml.
Reactivity:	Human, Mouse, Rat (Expected from sequence similarity: Pig, Cow)
Host:	Goat
Isotype:	IgG
Clonality:	Polyclonal
Immunogen:	Peptide with sequence DQVLCQGCSQAGP, from the C Terminus of the protein sequence according to NP_004459.2.
Formulation:	0.5 mg/ml in Tris saline, 0.02% sodium azide, pH7.3 with 0.5% bovine serum albumin
Concentration:	lot specific
Purification:	Purified from goat serum by ammonium sulphate precipitation followed by antigen affinity chromatography using the immunizing peptide. Supplied at 0.5 mg/ml in Tris saline, 0.02% sodium azide, pH7.3 with 0.5% bovine serum albumin. Aliquot and store at -20C. Minimize freezing and thawing.
Conjugation:	Unconjugated
Storage:	Store at -20°C as received.
Stability:	Stable for 12 months from date of receipt.
Gene Name:	four and a half LIM domains 3
Database Link:	NP_004459 Entrez Gene 14201 MouseEntrez Gene 313582 RatEntrez Gene 2275 Human Q13643
Background:	LIM proteins are defined by the possession of a highly conserved double zinc finger motif called the LIM domain. [supplied by OMIM]
Synonyms:	SLIM2



[View online »](#)

Product images:

TA305761 (1ug/ml) staining of Rat Skeletal Muscle lysate (35ug protein in RIPA buffer). Primary incubation was 1 hour. Detected by chemiluminescence.