

## Product datasheet for **TA305750**

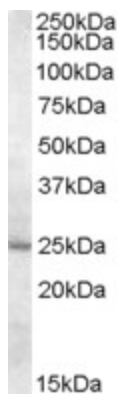
### MTHFS Goat Polyclonal Antibody

#### Product data:

Product Type:	Primary Antibodies
Applications:	WB
Recommended Dilution:	WB: 0.5-1.5ug/ml.
Reactivity:	Human (Expected from sequence similarity: Mouse)
Host:	Goat
Isotype:	IgG
Clonality:	Polyclonal
Immunogen:	Peptide with sequence KRCLQHQEVKPYT, from the internal region of the protein sequence according to NP_006432.1.
Formulation:	0.5 mg/ml in Tris saline, 0.02% sodium azide, pH7.3 with 0.5% bovine serum albumin
Concentration:	lot specific
Purification:	Purified from goat serum by ammonium sulphate precipitation followed by antigen affinity chromatography using the immunizing peptide. Supplied at 0.5 mg/ml in Tris saline, 0.02% sodium azide, pH7.3 with 0.5% bovine serum albumin. Aliquot and store at -20C. Minimize freezing and thawing.
Conjugation:	Unconjugated
Storage:	Store at -20°C as received.
Stability:	Stable for 12 months from date of receipt.
Gene Name:	5,10-methenyltetrahydrofolate synthetase (5-formyltetrahydrofolate cyclo-ligase)
Database Link:	<a href="#">NP_006432</a> <a href="#">Entrez Gene 107885 Mouse</a> <a href="#">Entrez Gene 10588 Human</a> <a href="#">P49914</a>
Synonyms:	HsT19268
Protein Pathways:	Metabolic pathways, One carbon pool by folate



[View online »](#)

**Product images:**

TA305750 (0.5ug/ml) staining of Human Liver lysate (35ug protein in RIPA buffer) with (B) and without (A) blocking with the immunising peptide. Primary incubation was 1 hour. Detected by chemiluminescence.