

Product datasheet for **TA305748**

DNA Polymerase lambda (POLL) Goat Polyclonal Antibody

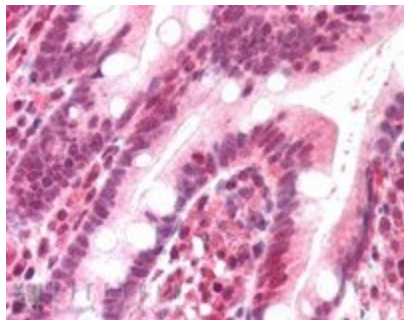
Product data:

Product Type:	Primary Antibodies
Applications:	IHC
Recommended Dilution:	IHC: 5-10ug/ml.
Reactivity:	Human (Expected from sequence similarity: Mouse)
Host:	Goat
Isotype:	IgG
Clonality:	Polyclonal
Immunogen:	Peptide with sequence C-LGLPYREPAERDW, from the C Terminus of the protein sequence according to NP_037406.1.
Formulation:	0.5 mg/ml in Tris saline, 0.02% sodium azide, pH7.3 with 0.5% bovine serum albumin
Concentration:	lot specific
Purification:	Purified from goat serum by ammonium sulphate precipitation followed by antigen affinity chromatography using the immunizing peptide. Supplied at 0.5 mg/ml in Tris saline, 0.02% sodium azide, pH7.3 with 0.5% bovine serum albumin. Aliquot and store at -20C. Minimize freezing and thawing.
Conjugation:	Unconjugated
Storage:	Store at -20°C as received.
Stability:	Stable for 12 months from date of receipt.
Gene Name:	polymerase (DNA) lambda
Database Link:	NP_037406 Entrez Gene 56626 Mouse Entrez Gene 27343 Human Q9UGP5
Synonyms:	BETAN; POLKAPPA
Protein Families:	Druggable Genome
Protein Pathways:	Base excision repair, Non-homologous end-joining



[View online »](#)

Product images:



TA305748 (5ug/ml) staining of paraffin embedded Human Small Intestine. Steamed antigen retrieval with citrate buffer pH 6, AP-staining.