

Product datasheet for **TA305743**

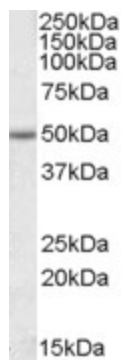
EVL Goat Polyclonal Antibody

Product data:

Product Type:	Primary Antibodies
Applications:	WB
Recommended Dilution:	WB: 1-3ug/ml.
Reactivity:	Human (Expected from sequence similarity: Mouse, Rat)
Host:	Goat
Isotype:	IgG
Clonality:	Polyclonal
Immunogen:	Peptide with sequence C-SQPPNSSEAGRKP, from the internal region of the protein sequence according to NP_057421.1.
Formulation:	0.5 mg/ml in Tris saline, 0.02% sodium azide, pH7.3 with 0.5% bovine serum albumin
Purification:	Purified from goat serum by ammonium sulphate precipitation followed by antigen affinity chromatography using the immunizing peptide. Supplied at 0.5 mg/ml in Tris saline, 0.02% sodium azide, pH7.3 with 0.5% bovine serum albumin. Aliquot and store at -20C. Minimize freezing and thawing.
Conjugation:	Unconjugated
Storage:	Store at -20°C as received.
Stability:	Stable for 12 months from date of receipt.
Gene Name:	Enah/Vasp-like
Database Link:	NP_057421 Entrez Gene 14026 Mouse Entrez Gene 79115 Rat Entrez Gene 51466 Human Q9UI08
Synonyms:	RNB6
Protein Families:	Druggable Genome



[View online »](#)

Product images:

TA305743 (1ug/ml) staining of Jurkat lysate (35ug protein in RIPA buffer). Primary incubation was 1 hour. Detected by chemiluminescence.