

Product datasheet for **TA305739**

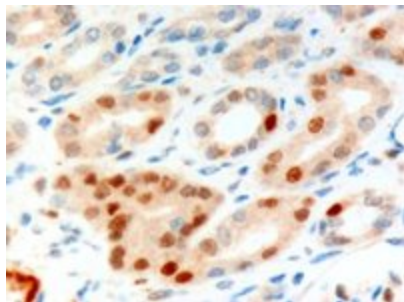
Anillin (ANLN) Goat Polyclonal Antibody

Product data:

Product Type:	Primary Antibodies
Applications:	IHC
Recommended Dilution:	IHC: 3-10mg/ml.
Reactivity:	Human (Expected from sequence similarity: Mouse, Cow)
Host:	Goat
Isotype:	IgG
Clonality:	Polyclonal
Immunogen:	Peptide with sequence WQPDACYKPIGKP, from the C Terminus of the protein sequence according to NP_061155.2.
Formulation:	0.5 mg/ml in Tris saline, 0.02% sodium azide, pH7.3 with 0.5% bovine serum albumin
Concentration:	lot specific
Purification:	Purified from goat serum by ammonium sulphate precipitation followed by antigen affinity chromatography using the immunizing peptide. Supplied at 0.5 mg/ml in Tris saline, 0.02% sodium azide, pH7.3 with 0.5% bovine serum albumin. Aliquot and store at -20C. Minimize freezing and thawing.
Conjugation:	Unconjugated
Storage:	Store at -20°C as received.
Stability:	Stable for 12 months from date of receipt.
Gene Name:	anillin actin binding protein
Database Link:	NP_061155 Entrez Gene 68743 Mouse Entrez Gene 54443 Human Q9NQW6
Synonyms:	FSGS8; scra; Scraps
Protein Families:	Druggable Genome



[View online »](#)

Product images:

TA305739 (10ug/ml) staining of paraffin embedded Human Kidney. Microwaved antigen retrieval with Tris/EDTA buffer pH9, HRP-staining.