

## Product datasheet for **TA305726**

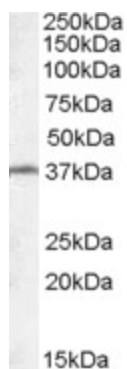
### **TSGA2 (RSPH1) Goat Polyclonal Antibody**

#### **Product data:**

<b>Product Type:</b>	Primary Antibodies
<b>Applications:</b>	WB
<b>Recommended Dilution:</b>	WB: 0.1-0.3ug/ml.
<b>Reactivity:</b>	Mouse (Expected from sequence similarity: Human, Rat, Cow)
<b>Host:</b>	Goat
<b>Isotype:</b>	IgG
<b>Clonality:</b>	Polyclonal
<b>Immunogen:</b>	Peptide with sequence C-HLNHRYQGKFLNKNP, from the internal region of the protein sequence according to NP_543136.1.
<b>Formulation:</b>	0.5 mg/ml in Tris saline, 0.02% sodium azide, pH7.3 with 0.5% bovine serum albumin
<b>Concentration:</b>	lot specific
<b>Purification:</b>	Purified from goat serum by ammonium sulphate precipitation followed by antigen affinity chromatography using the immunizing peptide. Supplied at 0.5 mg/ml in Tris saline, 0.02% sodium azide, pH7.3 with 0.5% bovine serum albumin. Aliquot and store at -20C. Minimize freezing and thawing.
<b>Conjugation:</b>	Unconjugated
<b>Storage:</b>	Store at -20°C as received.
<b>Stability:</b>	Stable for 12 months from date of receipt.
<b>Gene Name:</b>	radial spoke head 1 homolog
<b>Database Link:</b>	<a href="#">NP_543136</a> <a href="#">Entrez Gene 22092 Mouse</a> <a href="#">Entrez Gene 361818 Rat</a> <a href="#">Entrez Gene 89765 Human</a> <a href="#">Q8WYR4</a>
<b>Synonyms:</b>	CT79; RSP44; RSPH10A; TSA2; TSGA2



[View online »](#)

**Product images:**

TA305726 (0.1ug/ml) staining of Mouse Testis lysate (35ug protein in RIPA buffer). Primary incubation was 1 hour. Detected by chemiluminescence.