

Product datasheet for **TA305723**

Junctional Adhesion Molecule 1 (F11R) Goat Polyclonal Antibody

Product data:

Product Type:	Primary Antibodies
Applications:	WB
Recommended Dilution:	WB: 0.3-2ug/ml.
Reactivity:	Human (Expected from sequence similarity: Mouse, Rat, Dog, Pig)
Host:	Goat
Isotype:	IgG
Clonality:	Polyclonal
Immunogen:	Peptide with sequence C-QPSARSEGEFKQTS, from the C-Terminus of the protein sequence according to NP_058642.1.
Formulation:	0.5 mg/ml in Tris saline, 0.02% sodium azide, pH7.3 with 0.5% bovine serum albumin
Concentration:	lot specific
Purification:	Purified from goat serum by ammonium sulphate precipitation followed by antigen affinity chromatography using the immunizing peptide. Supplied at 0.5 mg/ml in Tris saline, 0.02% sodium azide, pH7.3 with 0.5% bovine serum albumin. Aliquot and store at -20C. Minimize freezing and thawing.
Conjugation:	Unconjugated
Storage:	Store at -20°C as received.
Stability:	Stable for 12 months from date of receipt.
Gene Name:	F11 receptor
Database Link:	NP_058642 Entrez Gene 16456 MouseEntrez Gene 116479 RatEntrez Gene 478974 DogEntrez Gene 50848 Human Q9Y624



[View online »](#)

Background:

Tight junctions represent one mode of cell-to-cell adhesion in epithelial or endothelial cell sheets, forming continuous seals around cells and serving as a physical barrier to prevent solutes and water from passing freely through the paracellular space. The protein encoded by this immunoglobulin superfamily gene member is an important regulator of tight junction assembly in epithelia. In addition, the encoded protein can act as (1) a receptor for reovirus, (2) a ligand for the integrin LFA1, involved in leukocyte transmigration, and (3) a platelet receptor. Multiple 5' alternatively spliced variants, encoding the same protein, have been identified but their biological validity has not been established. [provided by RefSeq]

Synonyms:

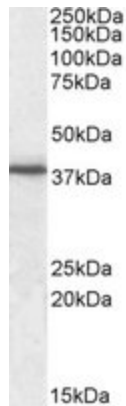
CD321; JAM; JAM1; JAMA; JCAM; KAT; PAM-1

Protein Families:

Druggable Genome, Transmembrane

Protein Pathways:

Cell adhesion molecules (CAMs), Epithelial cell signaling in Helicobacter pylori infection, Leukocyte transendothelial migration, Tight junction

Product images:

TA305723 (0.3ug/ml) staining of Human Peripheral Blood Mononucleocyte lysate (35ug protein in RIPA buffer). Primary incubation was 1 hour. Detected by chemiluminescence.