

## Product datasheet for **TA305722**

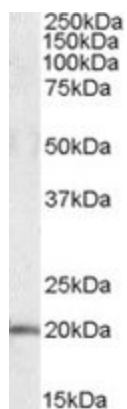
### U2AF1L3 (U2AF1L4) Goat Polyclonal Antibody

#### Product data:

Product Type:	Primary Antibodies
Applications:	WB
Recommended Dilution:	WB: 0.1-0.3ug/ml.
Reactivity:	Human (Expected from sequence similarity: Mouse, Rat, Dog)
Host:	Goat
Isotype:	IgG
Clonality:	Polyclonal
Immunogen:	Peptide with sequence C-EDGERAVAELSNR, from the internal region of the protein sequence according to NP_001035515.1 ; NP_659424.2.
Formulation:	0.5 mg/ml in Tris saline, 0.02% sodium azide, pH7.3 with 0.5% bovine serum albumin
Concentration:	lot specific
Purification:	Purified from goat serum by ammonium sulphate precipitation followed by antigen affinity chromatography using the immunizing peptide. Supplied at 0.5 mg/ml in Tris saline, 0.02% sodium azide, pH7.3 with 0.5% bovine serum albumin. Aliquot and store at -20C. Minimize freezing and thawing.
Conjugation:	Unconjugated
Storage:	Store at -20°C as received.
Stability:	Stable for 12 months from date of receipt.
Gene Name:	U2 small nuclear RNA auxiliary factor 1-like 4
Database Link:	<a href="#">NP_001035515</a> <a href="#">Entrez Gene 233073</a> <a href="#">MouseEntrez Gene 361542</a> <a href="#">RatEntrez Gene 476480</a> <a href="#">DogEntrez Gene 199746</a> <a href="#">Human Q8WU68</a>
Synonyms:	U2AF1-RS3; U2AF1L3; U2AF1L3V1; U2AF1RS3; U2af26



[View online »](#)

**Product images:**

TA305722 (0.1ug/ml) staining of Human Cerebellum lysate (35ug protein in RIPA buffer). Primary incubation was 1 hour. Detected by chemiluminescence.