

Product datasheet for **TA305719**

APOL3 Goat Polyclonal Antibody

Product data:

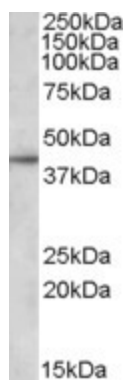
Product Type:	Primary Antibodies
Applications:	WB
Recommended Dilution:	WB: 1-3ug/ml.
Reactivity:	Human
Host:	Goat
Isotype:	IgG
Clonality:	Polyclonal
Immunogen:	Peptide with sequence ELTQIQRLNPCHTH, from the C Terminus of the protein sequence according to NP_663615.1, NP_055164.1, NP_663616.1.
Formulation:	0.5 mg/ml in Tris saline, 0.02% sodium azide, pH7.3 with 0.5% bovine serum albumin
Concentration:	lot specific
Purification:	Purified from goat serum by ammonium sulphate precipitation followed by antigen affinity chromatography using the immunizing peptide. Supplied at 0.5 mg/ml in Tris saline, 0.02% sodium azide, pH7.3 with 0.5% bovine serum albumin. Aliquot and store at -20C. Minimize freezing and thawing.
Conjugation:	Unconjugated
Storage:	Store at -20°C as received.
Stability:	Stable for 12 months from date of receipt.
Gene Name:	apolipoprotein L3
Database Link:	NP_055164 Entrez Gene 80833 Human O95236
Background:	This gene is a member of the apolipoprotein L gene family. The encoded protein is found in the cytoplasm, where it may affect the movement of lipids or allow the binding of lipids to organelles. In addition, expression of this gene is upregulated by tumor necrosis factor-alpha in endothelial cells lining the normal and atherosclerotic iliac artery and aorta. Six transcript variants encoding three different isoforms have been found for this gene.



[View online »](#)

Synonyms: 3; APOLIII; apolipoprotein L; apolipoprotein L-III; apolipoprotein L3; CG12-1; OTTHUMP00000028913; TNF-inducible protein CG12-1

Product images:



TA305719 (1ug/ml) staining of DAUDI lysate (35ug protein in RIPA buffer). Primary incubation was 1 hour. Detected by chemiluminescence.