

## Product datasheet for **TA305711**

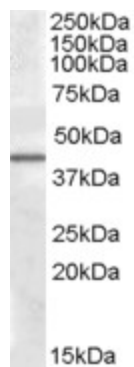
### **CAMK1D Goat Polyclonal Antibody**

#### **Product data:**

<b>Product Type:</b>	Primary Antibodies
<b>Applications:</b>	WB
<b>Recommended Dilution:</b>	WB: 1-3ug/ml.
<b>Reactivity:</b>	Human
<b>Host:</b>	Goat
<b>Isotype:</b>	IgG
<b>Clonality:</b>	Polyclonal
<b>Immunogen:</b>	Peptide with sequence ASQKDCAYVAKPES, from the C Terminus of the protein sequence according to NP_065130.1.
<b>Formulation:</b>	0.5 mg/ml in Tris saline, 0.02% sodium azide, pH7.3 with 0.5% bovine serum albumin
<b>Purification:</b>	Purified from goat serum by ammonium sulphate precipitation followed by antigen affinity chromatography using the immunizing peptide. Supplied at 0.5 mg/ml in Tris saline, 0.02% sodium azide, pH7.3 with 0.5% bovine serum albumin. Aliquot and store at -20C. Minimize freezing and thawing.
<b>Conjugation:</b>	Unconjugated
<b>Storage:</b>	Store at -20°C as received.
<b>Stability:</b>	Stable for 12 months from date of receipt.
<b>Gene Name:</b>	calcium/calmodulin dependent protein kinase ID
<b>Database Link:</b>	<a href="#">NP_065130</a> <a href="#">Entrez Gene 57118 Human</a> <a href="#">Q8IU85</a>
<b>Background:</b>	This gene encodes a member of the Ca <sup>2+</sup> /calmodulin-dependent protein kinase 1 subfamily of serine/threonine kinases. The encoded protein may be involved in the regulation of granulocyte function through the chemokine signal transduction pathway. Alternatively spliced transcript variants encoding different isoforms of this gene have been described. [provided by RefSeq]
<b>Synonyms:</b>	CaM-K1; CaMKID; CKLIK
<b>Protein Families:</b>	Druggable Genome, Protein Kinase



[View online »](#)

**Product images:**

TA305711 (0.5ug/ml) staining of Human Liver lysate (35ug protein in RIPA buffer). Primary incubation was 1 hour. Detected by chemiluminescence.