

Product datasheet for **TA305709**

CAMK2A Goat Polyclonal Antibody

Product data:

Product Type:	Primary Antibodies
Applications:	FC, IF, PEP-ELISA, WB
Recommended Dilution:	WB: 0.1-0.3ug/ml. IHC: 3-6 ug/ml.
Reactivity:	Human, Mouse (Expected from sequence similarity: Rat, Dog)
Host:	Goat
Isotype:	IgG
Clonality:	Polyclonal
Immunogen:	Peptide with sequence C-PRTAQSEETRVWHR, from the internal region of the protein sequence according to NP_057065.2; NP_741960.1.
Formulation:	0.5 mg/ml in Tris saline, 0.02% sodium azide, pH7.3 with 0.5% bovine serum albumin
Concentration:	lot specific
Purification:	Purified from goat serum by ammonium sulphate precipitation followed by antigen affinity chromatography using the immunizing peptide. Supplied at 0.5 mg/ml in Tris saline, 0.02% sodium azide, pH7.3 with 0.5% bovine serum albumin. Aliquot and store at -20C. Minimize freezing and thawing.
Conjugation:	Unconjugated
Storage:	Store at -20°C as received.
Stability:	Stable for 12 months from date of receipt.
Gene Name:	calcium/calmodulin dependent protein kinase II alpha
Database Link:	NP_057065 Entrez Gene 12322 MouseEntrez Gene 25400 RatEntrez Gene 612941 DogEntrez Gene 815 Human Q9UQM7



[View online »](#)

Background:

The product of this gene belongs to the serine/threonine protein kinases family, and to the Ca(2+)/calmodulin-dependent protein kinases subfamily. Calcium signaling is crucial for several aspects of plasticity at glutamatergic synapses. This calcium calmodulin-dependent protein kinase is composed of four different chains: alpha, beta, gamma, and delta. The alpha chain encoded by this gene is required for hippocampal long-term potentiation (LTP) and spatial learning. In addition to its calcium-calmodulin (CaM)-dependent activity, this protein can undergo autophosphorylation, resulting in CaM-independent activity. Two transcript variants encoding distinct isoforms have been identified for this gene. [provided by RefSeq]

Synonyms:

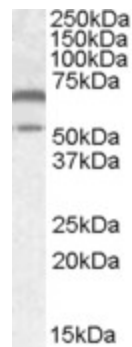
CAMKA

Protein Families:

Druggable Genome, Protein Kinase

Protein Pathways:

Calcium signaling pathway, ErbB signaling pathway, Glioma, GnRH signaling pathway, Long-term potentiation, Melanogenesis, Neurotrophin signaling pathway, Olfactory transduction, Oocyte meiosis, Wnt signaling pathway

Product images:

TA305709 (0.1ug/ml) staining of Mouse Brain lysate (35ug protein in RIPA buffer). Primary incubation was 1 hour. Detected by chemiluminescence.