

## Product datasheet for **TA305703**

### **RAB23 Goat Polyclonal Antibody**

#### **Product data:**

<b>Product Type:</b>	Primary Antibodies
<b>Applications:</b>	WB
<b>Recommended Dilution:</b>	WB: 1-3ug/ml.
<b>Reactivity:</b>	Mouse (Expected from sequence similarity: Human, Rat, Dog)
<b>Host:</b>	Goat
<b>Isotype:</b>	IgG
<b>Clonality:</b>	Polyclonal
<b>Immunogen:</b>	Peptide with sequence C-PNKQRTKKNRNP, from the C Terminus of the protein sequence according to NP_057361.3; NP_899050.1.
<b>Formulation:</b>	0.5 mg/ml in Tris saline, 0.02% sodium azide, pH7.3 with 0.5% bovine serum albumin
<b>Concentration:</b>	lot specific
<b>Purification:</b>	Purified from goat serum by ammonium sulphate precipitation followed by antigen affinity chromatography using the immunizing peptide. Supplied at 0.5 mg/ml in Tris saline, 0.02% sodium azide, pH7.3 with 0.5% bovine serum albumin. Aliquot and store at -20C. Minimize freezing and thawing.
<b>Conjugation:</b>	Unconjugated
<b>Storage:</b>	Store at -20°C as received.
<b>Stability:</b>	Stable for 12 months from date of receipt.
<b>Gene Name:</b>	RAB23, member RAS oncogene family
<b>Database Link:</b>	<a href="#">NP_057361</a> <a href="#">Entrez Gene 19335 MouseEntrez Gene 367242 RatEntrez Gene 481854 DogEntrez Gene 51715 Human</a> <a href="#">Q9ULC3</a>
<b>Background:</b>	The protein encoded by this gene belongs to the small GTPase superfamily, Rab family. It may be involved in small GTPase mediated signal transduction and intracellular protein transportation. Alternative splicing occurs at this locus and two transcript variants encoding the same protein have been identified. [provided by RefSeq]
<b>Synonyms:</b>	HSPC137

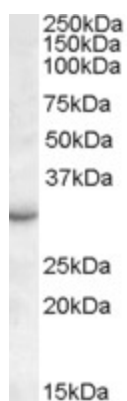


[View online »](#)

Protein Families: Druggable Genome

Protein Pathways: Hedgehog signaling pathway

### Product images:



TA305703 (0.1ug/ml) staining of Mouse Eye lysate (35ug protein in RIPA buffer). Primary incubation was 1 hour. Detected by chemiluminescence.