

## Product datasheet for **TA305699**

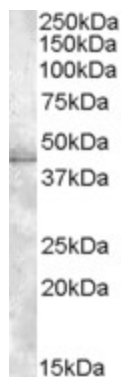
### MBNL1 Goat Polyclonal Antibody

#### Product data:

Product Type:	Primary Antibodies
Applications:	WB
Recommended Dilution:	WB: 1-3ug/ml.
Reactivity:	Human (Expected from sequence similarity: Mouse, Rat, Dog, Cow)
Host:	Goat
Isotype:	IgG
Clonality:	Polyclonal
Immunogen:	Peptide with sequence C-SAEHLTSHKYVTQ, from the C Terminus of the protein sequence according to NP_066368.2; NP_997175.1; NP_997176.1; NP_997177.1; NP_997178.1; NP_997179.1; NP_997180.1.
Formulation:	0.5 mg/ml in Tris saline, 0.02% sodium azide, pH7.3 with 0.5% bovine serum albumin
Concentration:	lot specific
Purification:	Purified from goat serum by ammonium sulphate precipitation followed by antigen affinity chromatography using the immunizing peptide. Supplied at 0.5 mg/ml in Tris saline, 0.02% sodium azide, pH7.3 with 0.5% bovine serum albumin. Aliquot and store at -20C. Minimize freezing and thawing.
Conjugation:	Unconjugated
Storage:	Store at -20°C as received.
Stability:	Stable for 12 months from date of receipt.
Gene Name:	muscleblind like splicing regulator 1
Database Link:	<a href="#">NP_066368</a> <a href="#">Entrez Gene 56758 Mouse</a> <a href="#">Entrez Gene 282635 Rat</a> <a href="#">Entrez Gene 477116 Dog</a> <a href="#">Entrez Gene 4154 Human</a> <a href="#">Q9NR56</a>
Synonyms:	EXP; EXP35; EXP40; EXP42; MBNL



[View online »](#)

**Product images:**

TA305699 (1ug/ml) staining of HeLa lysate (35ug protein in RIPA buffer). Primary incubation was 1 hour. Detected by chemiluminescence.