

## Product datasheet for **TA305696**

### Decorin (DCN) Goat Polyclonal Antibody

#### Product data:

Product Type:	Primary Antibodies
Applications:	WB
Recommended Dilution:	WB: 0.5-2ug/ml.
Reactivity:	Human, Cow, Pig, Guinea Pig
Host:	Goat
Isotype:	IgG
Clonality:	Polyclonal
Immunogen:	Peptide with sequence C-KISRVDAAASKGLNN, from the internal region of the protein sequence according to NP_001911.1; NP_598011.1; NP_598012.1;
Formulation:	0.5 mg/ml in Tris saline, 0.02% sodium azide, pH7.3 with 0.5% bovine serum albumin
Concentration:	lot specific
Purification:	Purified from goat serum by ammonium sulphate precipitation followed by antigen affinity chromatography using the immunizing peptide. Supplied at 0.5 mg/ml in Tris saline, 0.02% sodium azide, pH7.3 with 0.5% bovine serum albumin. Aliquot and store at -20C. Minimize freezing and thawing.
Conjugation:	Unconjugated
Storage:	Store at -20°C as received.
Stability:	Stable for 12 months from date of receipt.
Gene Name:	decorin
Database Link:	<a href="#">NP_001911</a> <a href="#">Entrez Gene 1634 Human</a> <a href="#">P07585</a>



[View online »](#)

**Background:**

The protein encoded by this gene is a small cellular or pericellular matrix proteoglycan that is closely related in structure to biglycan protein. The encoded protein and biglycan are thought to be the result of a gene duplication. This protein is a component of connective tissue, binds to type I collagen fibrils, and plays a role in matrix assembly. It contains one attached glycosaminoglycan chain. This protein is capable of suppressing the growth of various tumor cell lines. There are multiple alternatively spliced transcript variants known for this gene. This gene is a candidate gene for Marfan syndrome. [provided by RefSeq]

**Synonyms:**

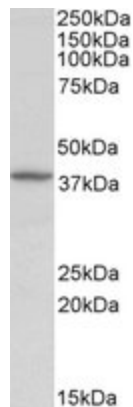
CSCD; DSPG2; PG40; PGII; PGS2; SLRR1B

**Protein Families:**

Druggable Genome, Secreted Protein

**Protein Pathways:**

TGF-beta signaling pathway

**Product images:**

TA305696 (0.5ug/ml) staining of Human Kidney lysate (35ug protein in RIPA buffer). Primary incubation was 1 hour. Detected by chemiluminescence.