

## Product datasheet for **TA305687**

### RNF34 Goat Polyclonal Antibody

#### Product data:

Product Type:	Primary Antibodies
Applications:	IHC
Recommended Dilution:	IHC: 4-8ug/ml.
Reactivity:	Human (Expected from sequence similarity: Mouse, Rat, Dog, Cow)
Host:	Goat
Isotype:	IgG
Clonality:	Polyclonal
Immunogen:	Peptide with sequence KAGATSMWASCC, from the N Terminus of the protein sequence according to NP_919247.1; NP_079402.2.
Formulation:	0.5 mg/ml in Tris saline, 0.02% sodium azide, pH7.3 with 0.5% bovine serum albumin
Concentration:	lot specific
Purification:	Purified from goat serum by ammonium sulphate precipitation followed by antigen affinity chromatography using the immunizing peptide. Supplied at 0.5 mg/ml in Tris saline, 0.02% sodium azide, pH7.3 with 0.5% bovine serum albumin. Aliquot and store at -20C. Minimize freezing and thawing.
Conjugation:	Unconjugated
Storage:	Store at -20°C as received.
Stability:	Stable for 12 months from date of receipt.
Gene Name:	ring finger protein 34
Database Link:	<a href="#">NP_919247</a> <a href="#">Entrez Gene 80751 Mouse</a> <a href="#">Entrez Gene 282845 Rat</a> <a href="#">Entrez Gene 477470 Dog</a> <a href="#">Entrez Gene 80196 Human</a> <a href="#">Q969K3</a>



[View online »](#)

**Background:**

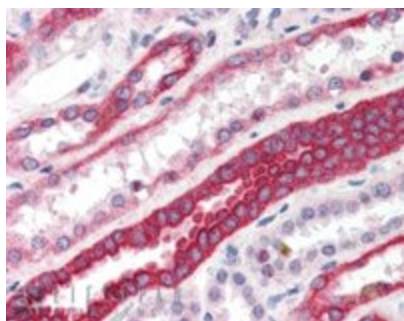
The protein encoded by this gene contains a RINF finger, a motif known to be involved in protein-protein and protein-DNA interactions. This protein interacts with DNAJA3/hTid-1, which is a Dnaj protein reported to function as a modulator of apoptosis. Overexpression of this gene in Hela cells was shown to confer the resistance to TNF-alpha induced apoptosis, suggesting an anti-apoptotic function of this protein. This protein can be cleaved by caspase-3 during the induction of apoptosis. Alternatively spliced transcript variants encoding distinct isoforms have been reported. [provided by RefSeq]

**Synonyms:**

CARP-1; CARP1; hRFI; RFI; RIF; RIFF

**Protein Families:**

Druggable Genome

**Product images:**

TA305687 (3.8ug/ml) staining of paraffin embedded Human Kidney. Steamed antigen retrieval with citrate buffer pH 6, AP-staining.