

## Product datasheet for **TA305683**

### Adipose Triglyceride Lipase (PNPLA2) Goat Polyclonal Antibody

#### Product data:

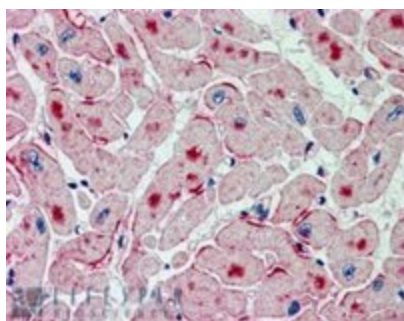
Product Type:	Primary Antibodies
Applications:	IHC, WB
Recommended Dilution:	WB: 0.5-2ug/ml.
Reactivity:	Human (Expected from sequence similarity: Mouse, Rat, Dog, Pig, Cow)
Host:	Goat
Isotype:	IgG
Clonality:	Polyclonal
Immunogen:	Peptide with sequence C-NIIIVSKEARKR, from the internal region of the protein sequence according to NP_065109.1.
Formulation:	0.5 mg/ml in Tris saline, 0.02% sodium azide, pH7.3 with 0.5% bovine serum albumin
Concentration:	lot specific
Purification:	Purified from goat serum by ammonium sulphate precipitation followed by antigen affinity chromatography using the immunizing peptide. Supplied at 0.5 mg/ml in Tris saline, 0.02% sodium azide, pH7.3 with 0.5% bovine serum albumin. Aliquot and store at -20C. Minimize freezing and thawing.
Conjugation:	Unconjugated
Storage:	Store at -20°C as received.
Stability:	Stable for 12 months from date of receipt.
Gene Name:	patatin like phospholipase domain containing 2
Database Link:	<a href="#">NP_065109</a> <a href="#">Entrez Gene 66853 MouseEntrez Gene 361676 RatEntrez Gene 611403 DogEntrez Gene 57104 Human</a> <a href="#">Q96AD5</a>
Synonyms:	1110001C14Rik; ATGL; FP17548; iPLA2zeta; PEDF-R; TTS-2.2; TTS2
Protein Families:	Transmembrane



[View online »](#)

**Product images:**

TA305683 (0.5ug/ml) staining of Human Adipose lysate (35ug protein in RIPA buffer). Primary incubation was 1 hour. Detected by chemiluminescence.



TA305683 (2.5ug/ml) staining of paraffin embedded Human Heart. Steamed antigen retrieval with citrate buffer pH 6, AP-staining.