

Product datasheet for **TA305682**

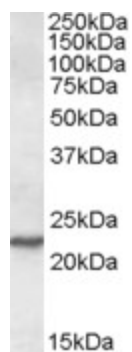
SAR1 (SAR1A) Goat Polyclonal Antibody

Product data:

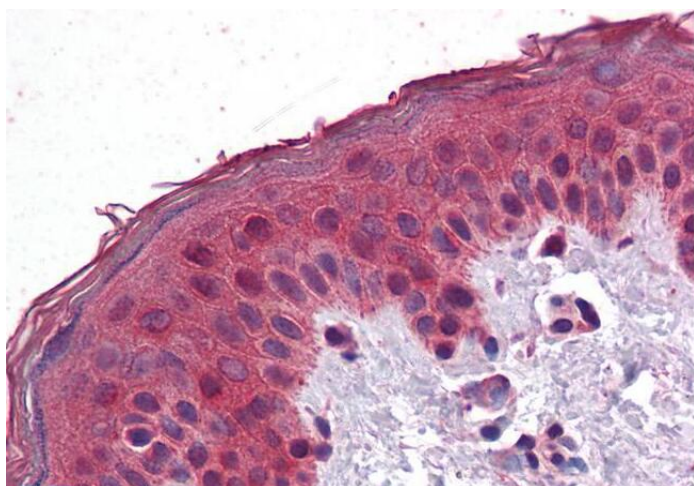
Product Type:	Primary Antibodies
Applications:	IHC, WB
Recommended Dilution:	WB: 0.1-0.3ug/ml.
Reactivity:	Mouse (Expected from sequence similarity: Human, Rat)
Host:	Goat
Isotype:	IgG
Clonality:	Polyclonal
Immunogen:	Peptide with sequence C-HSRLVESKVELNA, from the internal region of the protein sequence according to NP_064535.1.
Formulation:	0.5 mg/ml in Tris saline, 0.02% sodium azide, pH7.3 with 0.5% bovine serum albumin
Concentration:	lot specific
Purification:	Purified from goat serum by ammonium sulphate precipitation followed by antigen affinity chromatography using the immunizing peptide. Supplied at 0.5 mg/ml in Tris saline, 0.02% sodium azide, pH7.3 with 0.5% bovine serum albumin. Aliquot and store at -20C. Minimize freezing and thawing.
Conjugation:	Unconjugated
Storage:	Store at -20°C as received.
Stability:	Stable for 12 months from date of receipt.
Gene Name:	secretion associated Ras related GTPase 1A
Database Link:	NP_001136120 Entrez Gene 20224 MouseEntrez Gene 361842 RatEntrez Gene 56681 Human Q9NR31
Synonyms:	masra2; SAR1; Sara; SARA1



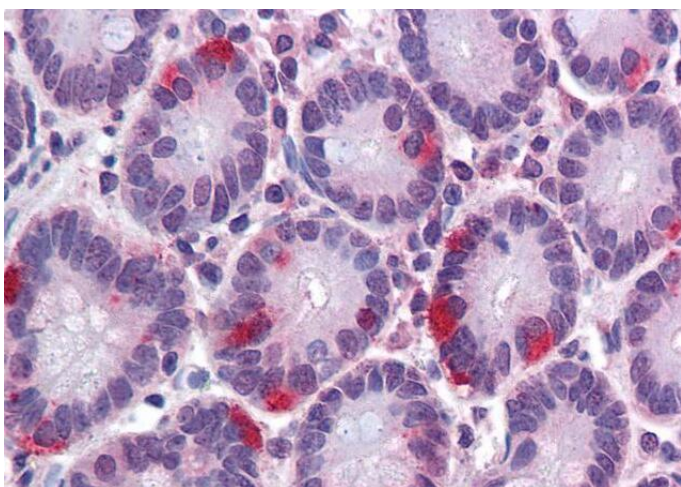
[View online »](#)

Product images:

TA305682 (0.1ug/ml) staining of NIH3T3 lysate (35ug protein in RIPA buffer). Detected by chemiluminescence.



TA305682 (3.75ug/ml) staining of paraffin embedded Human Skin. Steamed antigen retrieval with citrate buffer pH 6, AP-staining.



TA305682 (3.75ug/ml) staining of paraffin embedded Human Small Intestine. Steamed antigen retrieval with citrate buffer pH 6, AP-staining.