

Product datasheet for **TA305681**

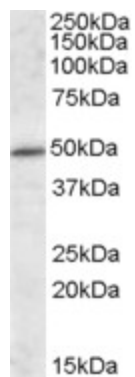
HIPPI (IFT57) Goat Polyclonal Antibody

Product data:

Product Type:	Primary Antibodies
Applications:	WB
Recommended Dilution:	WB: 1-3ug/ml.
Reactivity:	Human, Mouse (Expected from sequence similarity: Rat, Cow)
Host:	Goat
Isotype:	IgG
Clonality:	Polyclonal
Immunogen:	Peptide with sequence C-EQPQEYDDPNATISN, from the internal region of the protein sequence according to NP_060480.1.
Formulation:	0.5 mg/ml in Tris saline, 0.02% sodium azide, pH7.3 with 0.5% bovine serum albumin
Concentration:	lot specific
Purification:	Purified from goat serum by ammonium sulphate precipitation followed by antigen affinity chromatography using the immunizing peptide. Supplied at 0.5 mg/ml in Tris saline, 0.02% sodium azide, pH7.3 with 0.5% bovine serum albumin. Aliquot and store at -20C. Minimize freezing and thawing.
Conjugation:	Unconjugated
Storage:	Store at -20°C as received.
Stability:	Stable for 12 months from date of receipt.
Gene Name:	intraflagellar transport 57
Database Link:	NP_060480 Entrez Gene 73916 Mouse Entrez Gene 303968 Rat Entrez Gene 55081 Human Q9NWB7
Synonyms:	ESRRBL1; HIPPI; MHS4R2
Protein Families:	Druggable Genome
Protein Pathways:	Huntington's disease



[View online »](#)

Product images:

TA305681 (1ug/ml) staining of Mouse Brain lysate (35ug protein in RIPA buffer). Primary incubation was 1 hour. Detected by chemiluminescence.