

## Product datasheet for **TA305671**

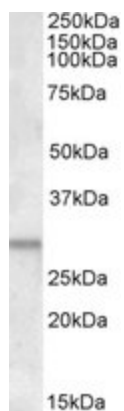
### ATF5 Goat Polyclonal Antibody

#### Product data:

Product Type:	Primary Antibodies
Applications:	WB
Recommended Dilution:	WB: 1-3ug/ml.
Reactivity:	Human (Expected from sequence similarity: Mouse, Rat)
Host:	Goat
Isotype:	IgG
Clonality:	Polyclonal
Immunogen:	Peptide with sequence EVYKARSQRTRSC, from the C Terminus of the protein sequence according to NP_036200.2.
Formulation:	0.5 mg/ml in Tris saline, 0.02% sodium azide, pH7.3 with 0.5% bovine serum albumin
Concentration:	lot specific
Purification:	Purified from goat serum by ammonium sulphate precipitation followed by antigen affinity chromatography using the immunizing peptide. Supplied at 0.5 mg/ml in Tris saline, 0.02% sodium azide, pH7.3 with 0.5% bovine serum albumin. Aliquot and store at -20C. Minimize freezing and thawing.
Conjugation:	Unconjugated
Storage:	Store at -20°C as received.
Stability:	Stable for 12 months from date of receipt.
Gene Name:	activating transcription factor 5
Database Link:	<a href="#">NP_036200</a> <a href="#">Entrez Gene 107503 MouseEntrez Gene 282840 RatEntrez Gene 22809 Human Q9Y2D1</a>
Synonyms:	ATFX; HMFN0395
Protein Families:	Transcription Factors



[View online »](#)

**Product images:**

TA305671 (1.5ug/ml) staining of Human Heart lysate (35ug protein in RIPA buffer). Primary incubation was 1 hour. Detected by chemiluminescence.