

Product datasheet for **TA305664**

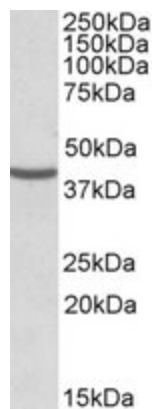
NUDC Goat Polyclonal Antibody

Product data:

Product Type:	Primary Antibodies
Applications:	WB
Recommended Dilution:	WB: 0.3-1ug/ml.
Reactivity:	Human (Expected from sequence similarity: Mouse, Rat, Dog, Cow)
Host:	Goat
Isotype:	IgG
Clonality:	Polyclonal
Immunogen:	Peptide with sequence C-PNLGNGADLPNYR, from the internal region of the protein sequence according to NP_006591.1.
Formulation:	0.5 mg/ml in Tris saline, 0.02% sodium azide, pH7.3 with 0.5% bovine serum albumin
Concentration:	lot specific
Purification:	Purified from goat serum by ammonium sulphate precipitation followed by antigen affinity chromatography using the immunizing peptide. Supplied at 0.5 mg/ml in Tris saline, 0.02% sodium azide, pH7.3 with 0.5% bovine serum albumin. Aliquot and store at -20C. Minimize freezing and thawing.
Conjugation:	Unconjugated
Storage:	Store at -20°C as received.
Stability:	Stable for 12 months from date of receipt.
Gene Name:	nudC nuclear distribution protein
Database Link:	NP_006591 Entrez Gene 18221 MouseEntrez Gene 29648 RatEntrez Gene 487349 DogEntrez Gene 10726 Human Q9Y266
Background:	NudC was first identified as a regulator of nuclear movement in the asexual reproductive cycle of the filamentous fungus <i>Aspergillus nidulans</i> . Human NUDC is a nuclear movement protein that associates with dynein (see DYNC1H1; MIM 600112) (Aumais et al., 2003 [PubMed 12679384]). [supplied by OMIM]
Synonyms:	HNUDC; MNUDC; NPD011



[View online »](#)

Product images:

TA305664 (0.3ug/ml) staining of HeLa lysate (35ug protein in RIPA buffer). Primary incubation was 1 hour. Detected by chemiluminescence.