

## Product datasheet for **TA305643**

### PI 3 Kinase Class 2A (PIK3C2A) Goat Polyclonal Antibody

#### Product data:

Product Type:	Primary Antibodies
Applications:	IHC
Recommended Dilution:	IHC: 5-10ug/ml.
Reactivity:	Human (Expected from sequence similarity: Mouse, Dog)
Host:	Goat
Isotype:	IgG
Clonality:	Polyclonal
Immunogen:	Peptide with sequence C-TVKWYQLTAATYL, from the C Terminus of the protein sequence according to NP_002636.2.
Formulation:	0.5 mg/ml in Tris saline, 0.02% sodium azide, pH7.3 with 0.5% bovine serum albumin
Concentration:	lot specific
Purification:	Purified from goat serum by ammonium sulphate precipitation followed by antigen affinity chromatography using the immunizing peptide. Supplied at 0.5 mg/ml in Tris saline, 0.02% sodium azide, pH7.3 with 0.5% bovine serum albumin. Aliquot and store at -20C. Minimize freezing and thawing.
Conjugation:	Unconjugated
Storage:	Store at -20°C as received.
Stability:	Stable for 12 months from date of receipt.
Gene Name:	phosphatidylinositol-4-phosphate 3-kinase catalytic subunit type 2 alpha
Database Link:	<a href="#">NP_002636</a> <a href="#">Entrez Gene 18704 Mouse</a> <a href="#">Entrez Gene 485399 Dog</a> <a href="#">Entrez Gene 5286 Human</a> <a href="#">O00443</a>



[View online »](#)

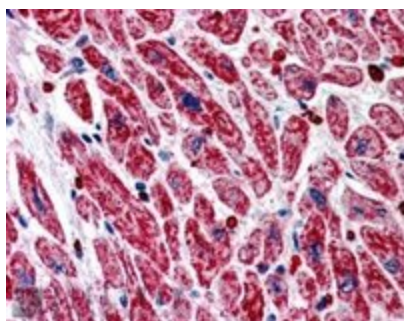
**Background:** The protein encoded by this gene belongs to the phosphoinositide 3-kinase (PI3K) family. PI3-kinases play roles in signaling pathways involved in cell proliferation, oncogenic transformation, cell survival, cell migration, and intracellular protein trafficking. This protein contains a lipid kinase catalytic domain as well as a C-terminal C2 domain, a characteristic of class II PI3-kinases. C2 domains act as calcium-dependent phospholipid binding motifs that mediate translocation of proteins to membranes, and may also mediate protein-protein interactions. The PI3-kinase activity of this protein is not sensitive to nanomolar levels of the inhibitor wortmanin. This protein was shown to be able to be activated by insulin and may be involved in integrin-dependent signaling. [provided by RefSeq]

**Synonyms:** CPK; PI3-K-C2(ALPHA); PI3-K-C2A

**Protein Families:** Druggable Genome

**Protein Pathways:** Inositol phosphate metabolism, Metabolic pathways, Phosphatidylinositol signaling system

**Product images:**



TA305643 (5ug/ml) staining of paraffin embedded Human Heart. Steamed antigen retrieval with citrate buffer pH 6, AP-staining.