

## Product datasheet for **TA305637**

### Ferritin Heavy Chain (FTH1) Goat Polyclonal Antibody

#### Product data:

Product Type:	Primary Antibodies
Applications:	IHC, WB
Recommended Dilution:	WB: 0.03-0.1 ug/ml.
Reactivity:	Human (Expected from sequence similarity: Dog)
Host:	Goat
Isotype:	IgG
Clonality:	Polyclonal
Immunogen:	Peptide with sequence C-DKHTLGSDNES, from the C Terminus of the protein sequence according to NP_002023.2.
Formulation:	0.5 mg/ml in Tris saline, 0.02% sodium azide, pH7.3 with 0.5% bovine serum albumin
Concentration:	lot specific
Purification:	Purified from goat serum by ammonium sulphate precipitation followed by antigen affinity chromatography using the immunizing peptide. Supplied at 0.5 mg/ml in Tris saline, 0.02% sodium azide, pH7.3 with 0.5% bovine serum albumin. Aliquot and store at -20C. Minimize freezing and thawing.
Conjugation:	Unconjugated
Storage:	Store at -20°C as received.
Stability:	Stable for 12 months from date of receipt.
Gene Name:	ferritin heavy chain 1
Database Link:	<a href="#">NP_002023</a> <a href="#">Entrez Gene 100499480 Dog</a> <a href="#">Entrez Gene 2495 Human</a> <a href="#">P02794</a>



[View online »](#)

**Background:**

This gene encodes the heavy subunit of ferritin, the major intracellular iron storage protein in prokaryotes and eukaryotes. It is composed of 24 subunits of the heavy and light ferritin chains. Variation in ferritin subunit composition may affect the rates of iron uptake and release in different tissues. A major function of ferritin is the storage of iron in a soluble and nontoxic state. Defects in ferritin proteins are associated with several neurodegenerative diseases. This gene has multiple pseudogenes. Several alternatively spliced transcript variants have been observed, but their biological validity has not been determined. [provided by RefSeq]

**Synonyms:**

FHC; FTH; FTHL6; HFE5; PIG15; PLIF

**Protein Families:**

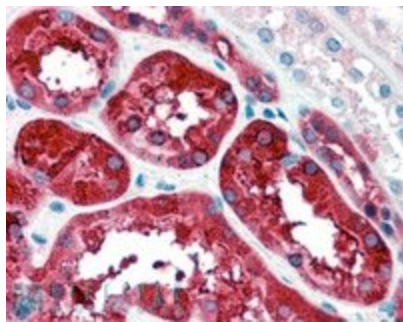
Druggable Genome

**Protein Pathways:**

Porphyrin and chlorophyll metabolism

**Product images:**


TA305637 (4ug/ml) staining of paraffin embedded Human Kidney. Steamed antigen retrieval with citrate buffer pH 6, AP-staining.



TA305637 (4ug/ml) staining of paraffin embedded Human Kidney. Steamed antigen retrieval with citrate buffer pH 6, AP-staining.