

Product datasheet for **TA305628**

BMAL1 (ARNTL) Goat Polyclonal Antibody

Product data:

Product Type:	Primary Antibodies
Applications:	WB
Recommended Dilution:	WB: 0.3-1ug/ml.
Reactivity:	Human (Expected from sequence similarity: Mouse, Rat, Dog, Pig, Cow)
Host:	Goat
Isotype:	IgG
Clonality:	Polyclonal
Immunogen:	Peptide with sequence REKITTNCYKFKIKD, from the internal region of the protein sequence according to NP_001169.3; NP_001025444.1.
Formulation:	0.5 mg/ml in Tris saline, 0.02% sodium azide, pH7.3 with 0.5% bovine serum albumin
Concentration:	lot specific
Purification:	Purified from goat serum by ammonium sulphate precipitation followed by antigen affinity chromatography using the immunizing peptide. Supplied at 0.5 mg/ml in Tris saline, 0.02% sodium azide, pH7.3 with 0.5% bovine serum albumin. Aliquot and store at -20C. Minimize freezing and thawing.
Conjugation:	Unconjugated
Storage:	Store at -20°C as received.
Stability:	Stable for 12 months from date of receipt.
Gene Name:	aryl hydrocarbon receptor nuclear translocator like
Database Link:	NP_001025443 Entrez Gene 11865 MouseEntrez Gene 29657 RatEntrez Gene 476860 DogEntrez Gene 406 Human O00327
Background:	The protein encoded by this gene is a basic helix-loop-helix protein that forms a heterodimer with CLOCK. This complex binds an E-box upstream of the PER1 gene, activating this gene and possibly other circadian rhythm-associated genes. Three transcript variants encoding two different isoforms have been found for this gene. [provided by RefSeq]
Synonyms:	bHLHe5; BMAL1; BMAL1c; JAP3; MOP3; PASD3; TIC

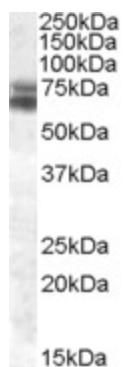


[View online »](#)

Protein Families: Druggable Genome, Transcription Factors

Protein Pathways: Circadian rhythm - mammal

Product images:



TA305628 (0.3ug/ml) staining of Human Brain (Cerebellum) lysate (35ug protein in RIPA buffer). Primary incubation was 1 hour. Detected by chemiluminescence.